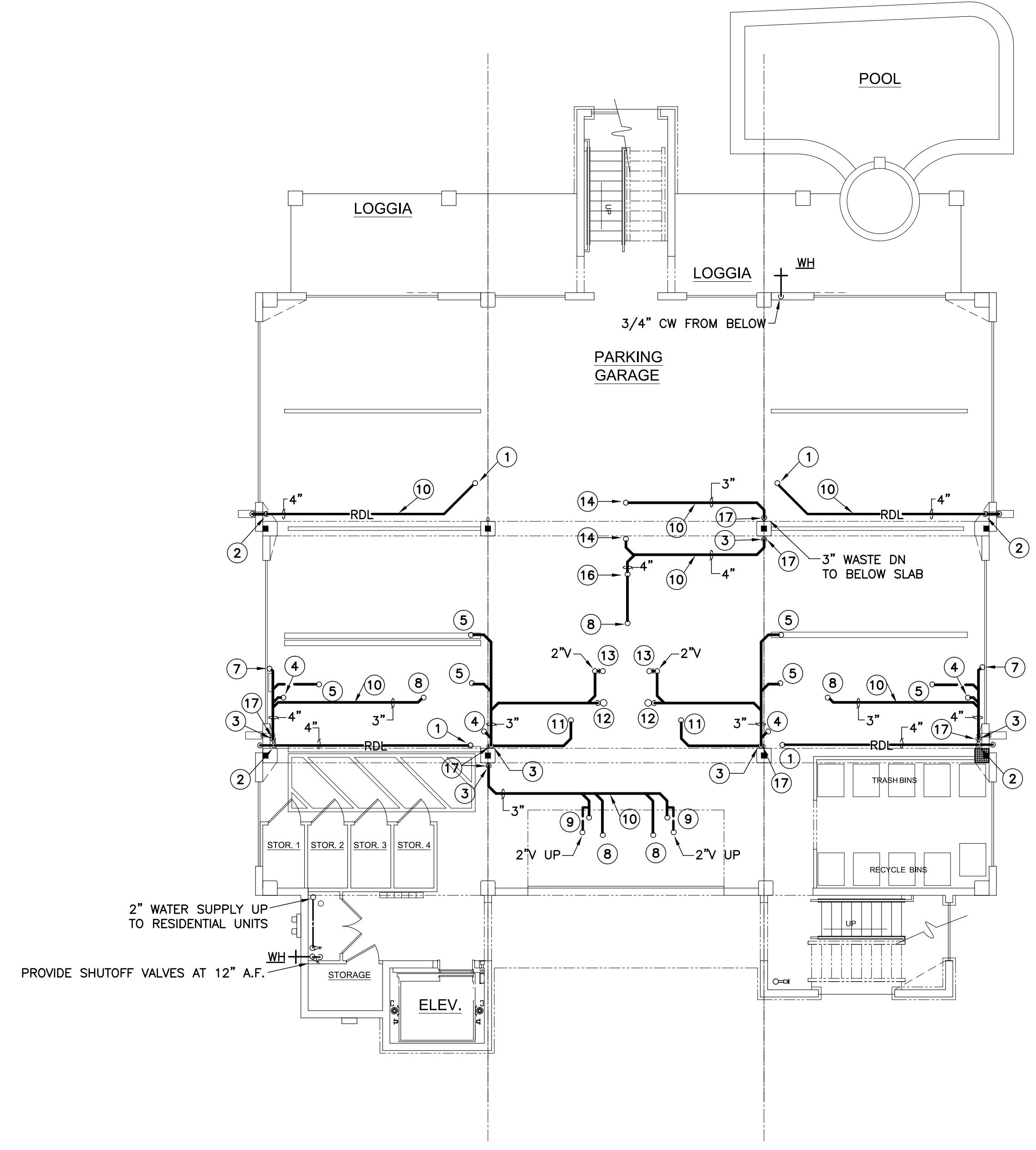


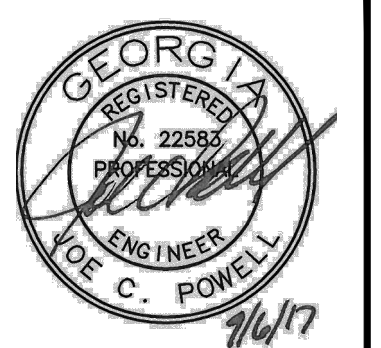
**1 PLUMBING PLAN - GROUND FLOOR - BELOW SLAB**  
 SCALE: 1/8" = 1'-0"



**2 PLUMBING PLAN - GROUND FLOOR**  
 SCALE: 1/8" = 1'-0"

**KEYNOTES:** (THIS SHEET ONLY)

- 1 3" ROOF DRAIN PIPING FROM ABOVE, TRANSITION TO 4" HORIZONTAL ROOF DRAIN PIPING.
- 2 4" ROOF DRAIN PIPING EXPOSED ON INTERIOR WALL OF PARKING GARAGE. DISCHARGE AT ±6" ABOVE GRADE.
- 3 4" WASTE DOWN TO BELOW SLAB
- 4 3" WASTE FROM WATER CLOSET ABOVE.
- 5 2" WASTE FROM LAVATORY ABOVE.
- 6 2" WASTE FROM TUB DRAIN ABOVE.
- 7 2" WASTE FROM SINK STACK ABOVE.
- 8 3" WASTE FROM ABOVE.
- 9 3" WASTE FROM HUB DRAIN ABOVE.
- 10 PIPING LOCATED IN GROUND FLOOR CEILING.
- 11 3" WASTE FROM WASHING MACHINE BOX ABOVE.
- 12 2" WASTE FROM SHOWER DRAIN ABOVE.
- 13 2" WASTE FROM TUB DRAIN ABOVE.
- 14 2" WASTE FROM ABOVE.
- 15 3/4" CW BELOW SLAB.
- 16 4" WASTE FROM ABOVE.
- 17 PROVIDE CLEANOUT TEE AT ±18" ABOVE SLAB.



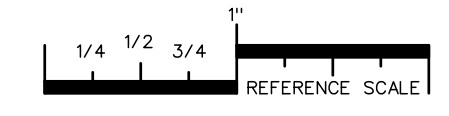
**USSERY/RULE ARCHITECTS P.C.**  
 1804-A FEDERICA ROAD  
 ST. SIMONS ISLAND, GEORGIA 31522  
 www.urarch.com PH. 912-638-6688



**VIEWPOINT CONDOMINIUM**  
 LOT 6 & 7, BLOCK B, ARNOLD SUBDIVISION  
 1124 POSTELL AVENUE  
 ST. SIMONS ISLAND, GA.

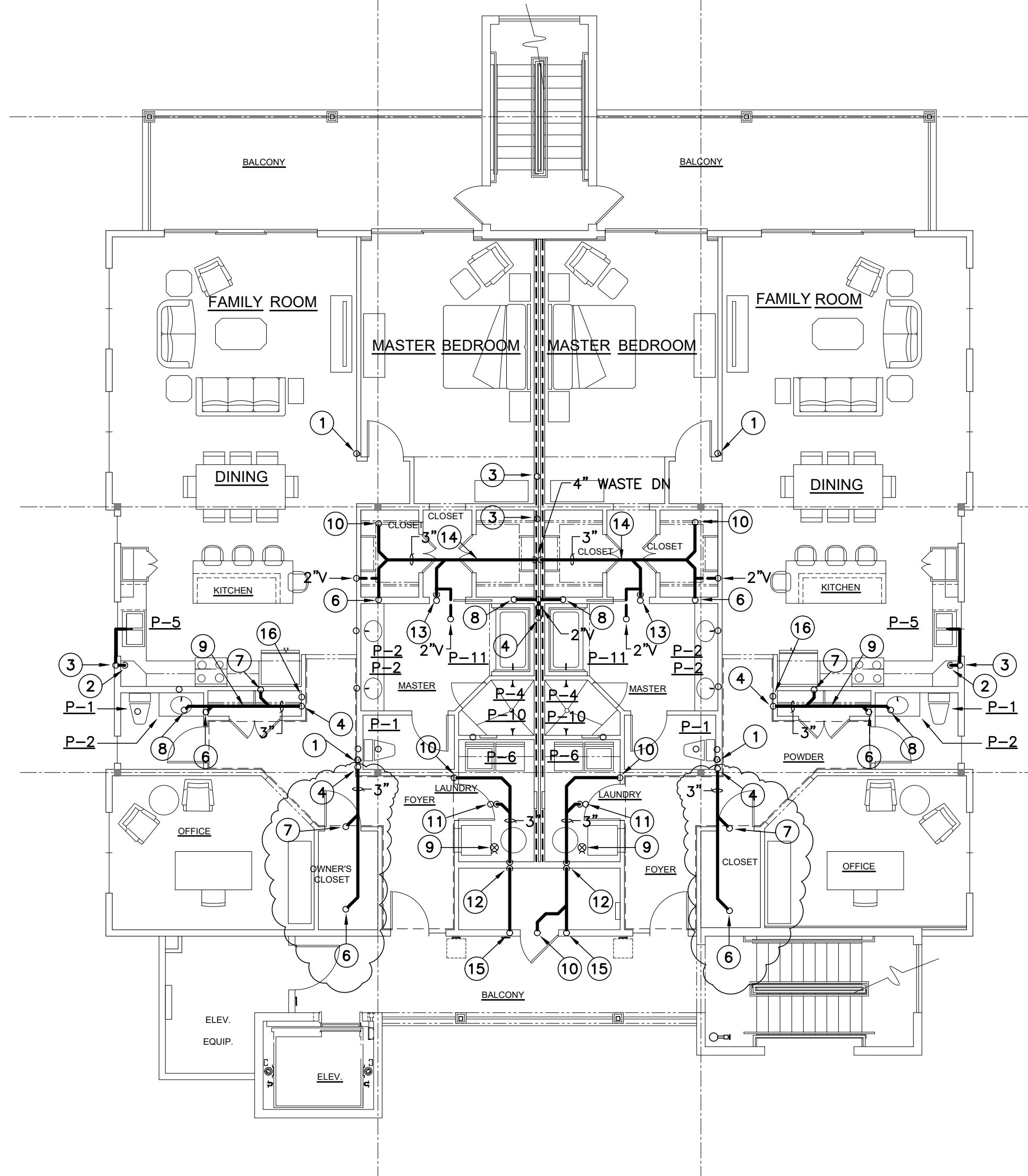
1515
08-23-17

**P1.0**

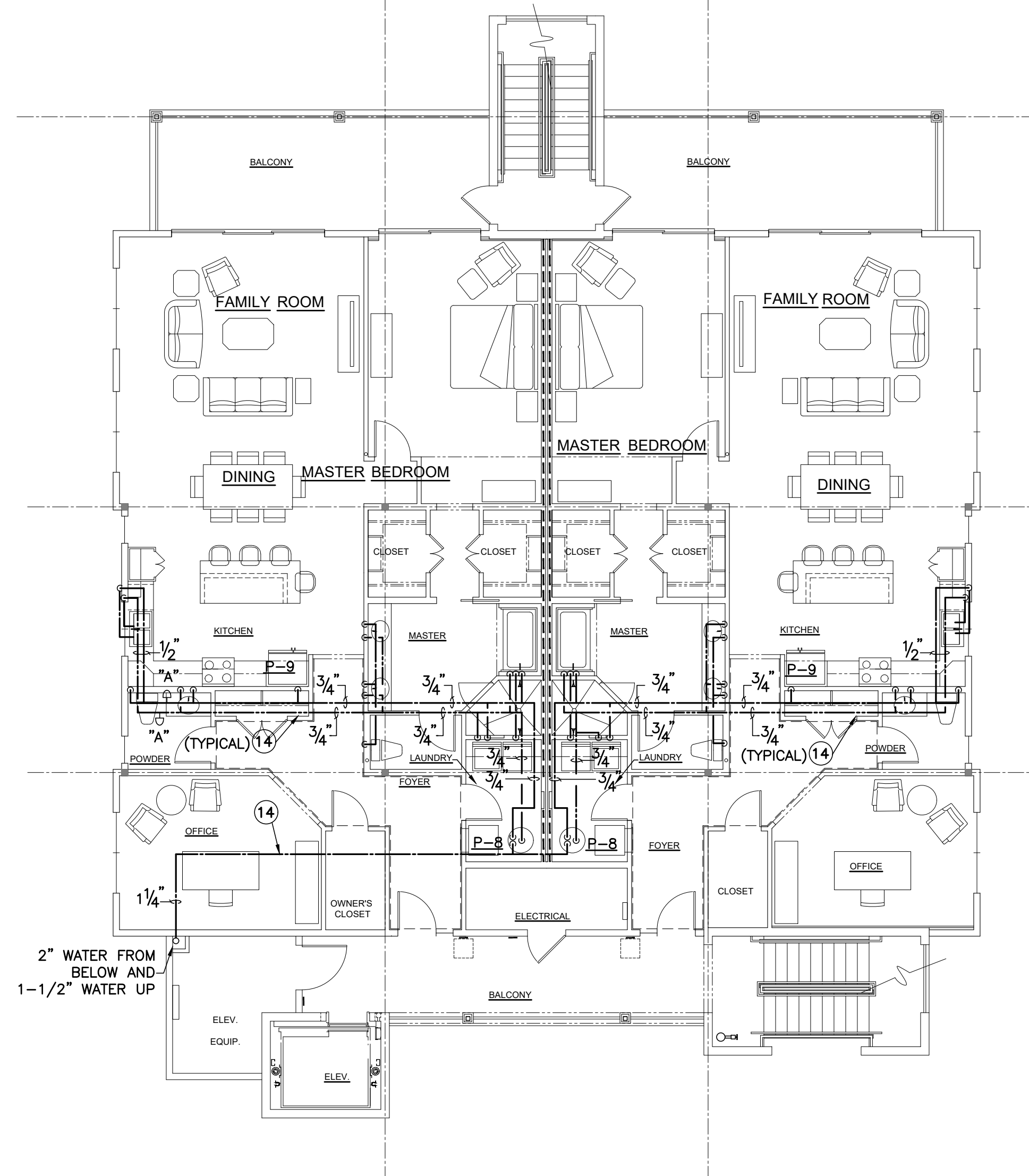


PLOT DATE: 09/06/17  
 FILENAME: 17039P1  
 BASESHT:  
 PLOT SCALE: 1 = 96  
 MFJ

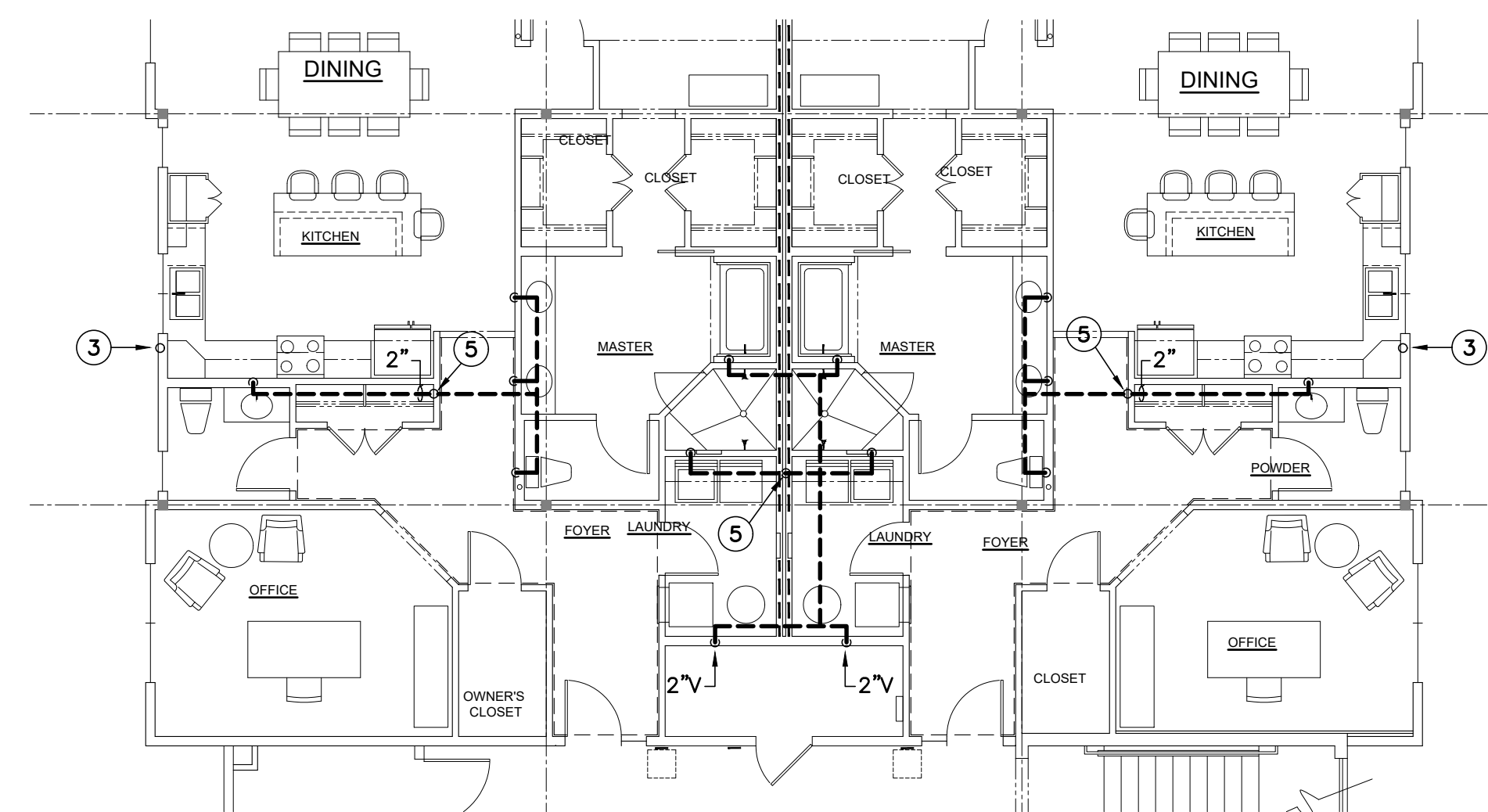
COPYRIGHT © 2017  
 PRUETT, FORBES & ASSOCIATES, INC.  
 AUGUSTA, GA 30901 (706) 722-3959



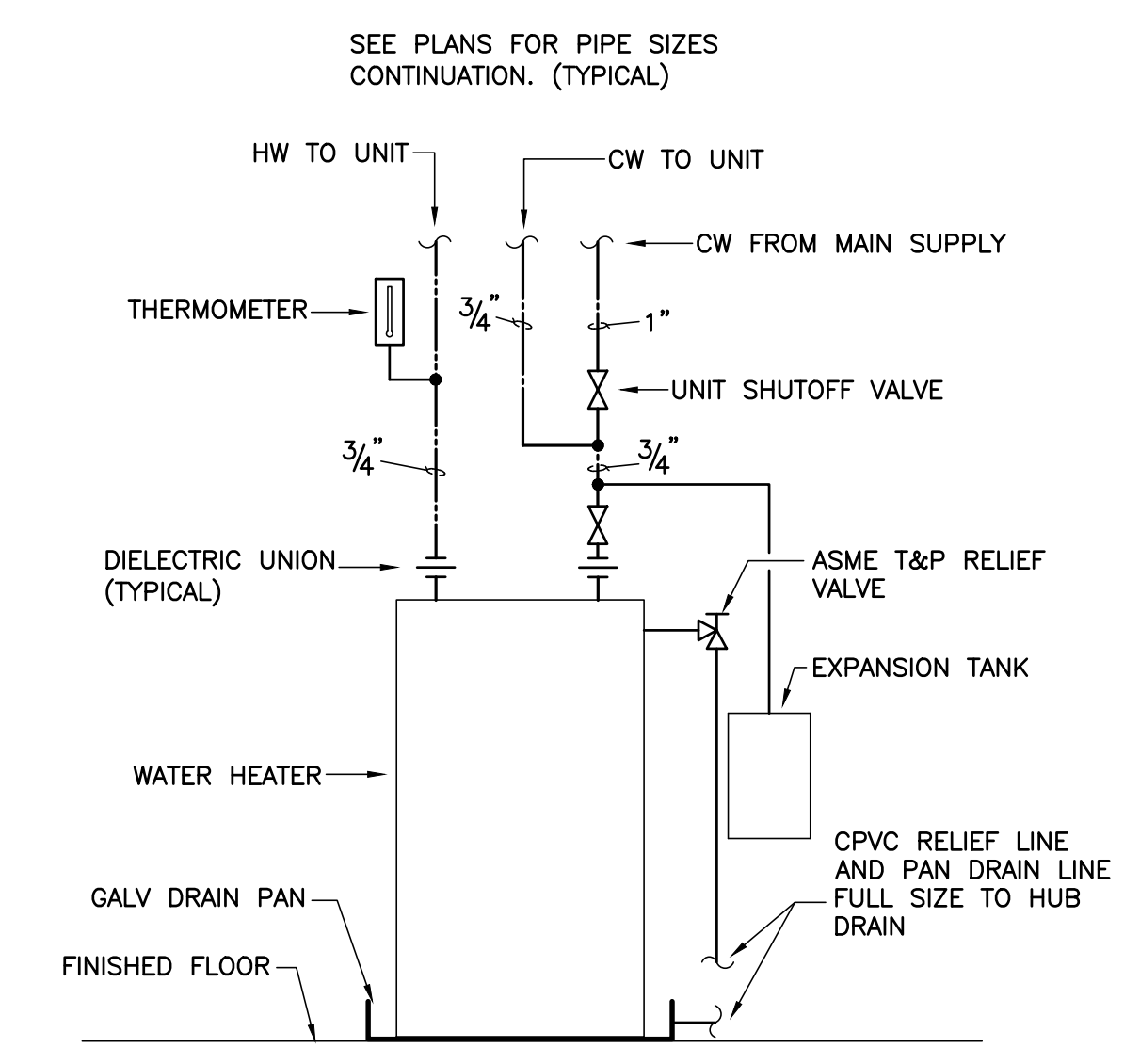
**1 PLUMBING WASTE PLAN - FIRST FLOOR**  
 P1.1 SCALE: 1/8" = 1'-0"



**2 PLUMBING WATER PLAN - FIRST FLOOR**  
 P1.1 SCALE: 1/8" = 1'-0"

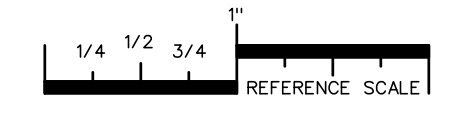


**3 PLUMBING VENT PART PLAN - FIRST FLOOR**  
 P1.1 SCALE: 1/8" = 1'-0"



**4 WATER HEATER PIPING DETAIL**  
 P1.1 NOT TO SCALE

- KEYNOTES:** (THIS SHEET ONLY)
- 1 3" ROOF DRAIN PIPING FROM ABOVE AND DOWN
  - 2 OFFSET ABOVE FIRST FLOOR IN CABINET SPACE DUE TO STRUCTURAL CONFLICT.
  - 3 2" WASTE & VENT STACK.
  - 4 3" WASTE STACK.
  - 5 2" VENT UP.
  - 6 3" WASTE FROM WATER CLOSET ABOVE.
  - 7 2" WASTE FROM LAVATORY ABOVE.
  - 8 2" WASTE FROM TUB DRAIN ABOVE.
  - 9 3" HUB DRAIN WITH TRAP SEAL FOR HVAC CONDENSATE.
  - 10 3" WASTE FROM ABOVE.
  - 11 3" WASTE FROM HUB DRAIN ABOVE.
  - 12 3" WASTE DOWN.
  - 13 2" WASTE FROM SHOWER DRAIN ABOVE.
  - 14 PIPING LOCATED IN FIRST FLOOR CEILING.
  - 15 3" WASTE FROM WASHING MACHINE BOX ABOVE.
  - 16 VENT RISER SEE PART PLAN.



PLOT DATE: 06/08/18  
 FILENAME: 17039P1  
 BASESHT:  
 PLOT SCALE: 1 = 96  
 MFJ

COPYRIGHT © 2018  
 PRIETTI, FORO & ASSOCIATES, INC.  
 AUGUSTA, GA 30901 (706) 722-3959

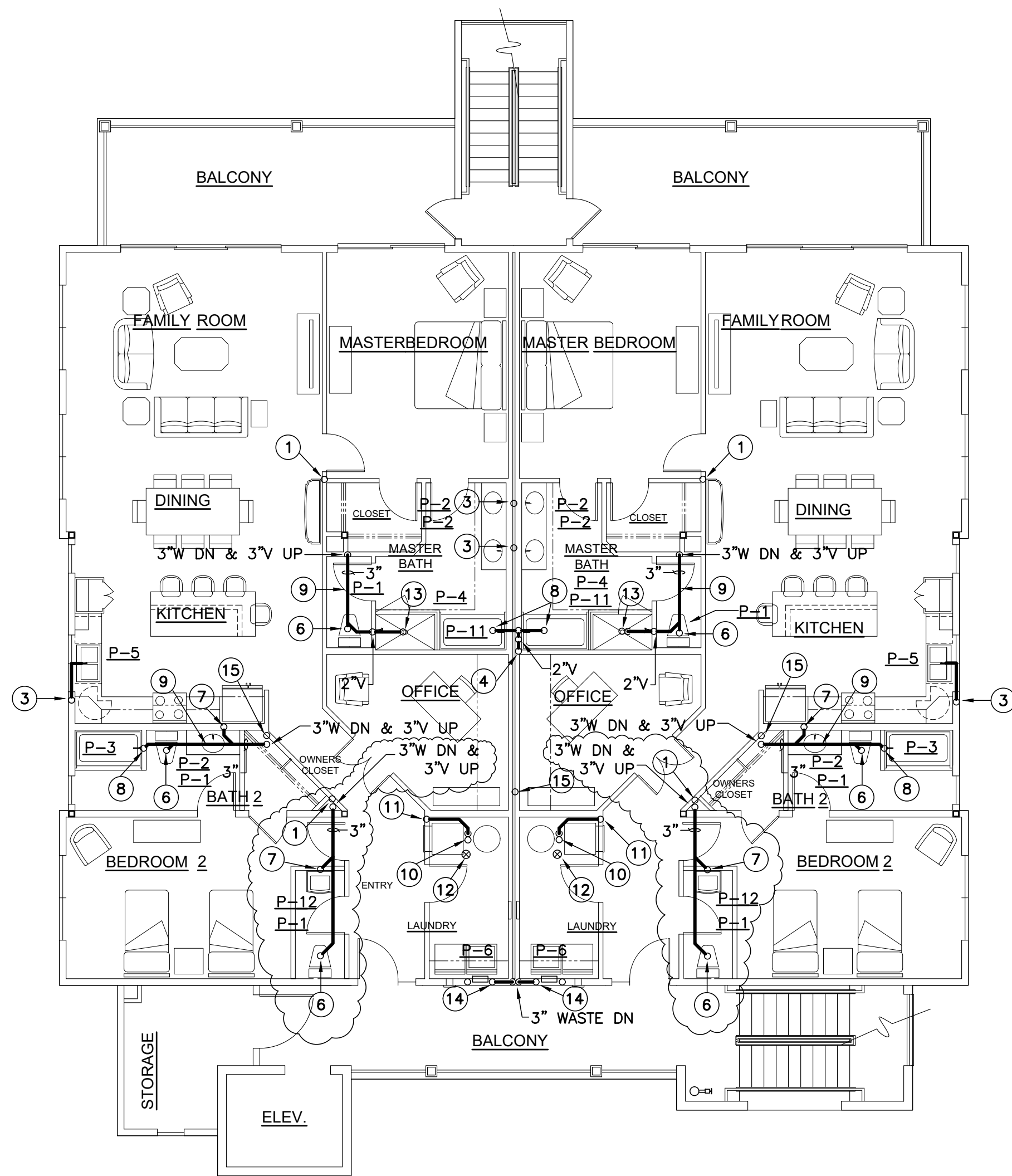
**VIEWPOINT CONDOMINIUM**  
 LOT 6 & 7, BLOCK B, ARNOLD SUBDIVISION  
 1124 POSTELL AVENUE  
 ST. SIMONS ISLAND, GA.

1515  
 08-23-17  
 06-08-18

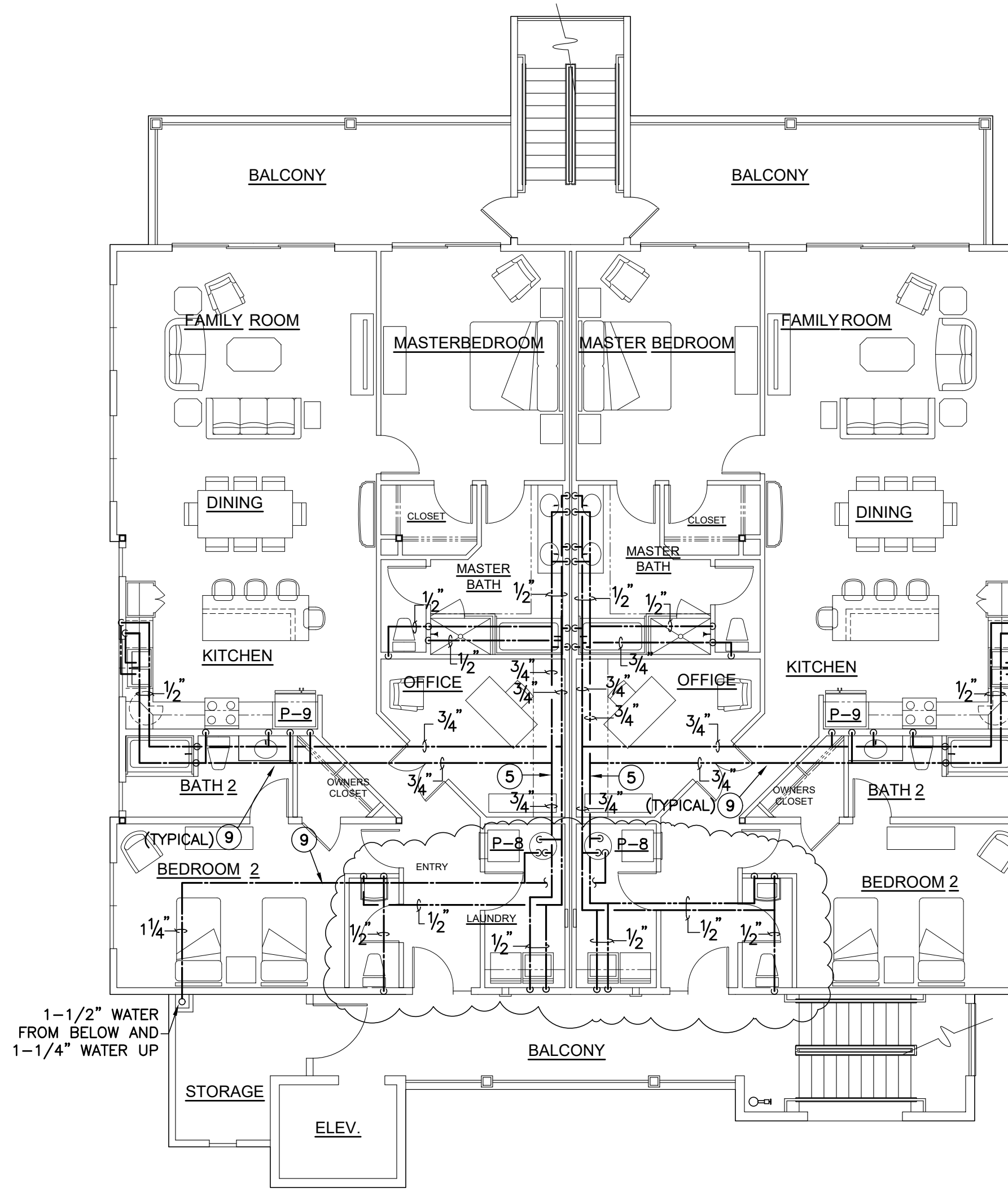
**P1.1**

**UR**  
 USSEY/RULE ARCHITECTS P.C.  
 1804-A FEDERICA ROAD  
 ST. SIMONS ISLAND, GEORGIA 31522  
 www.urarch.com  
 PH. 912-638-6688

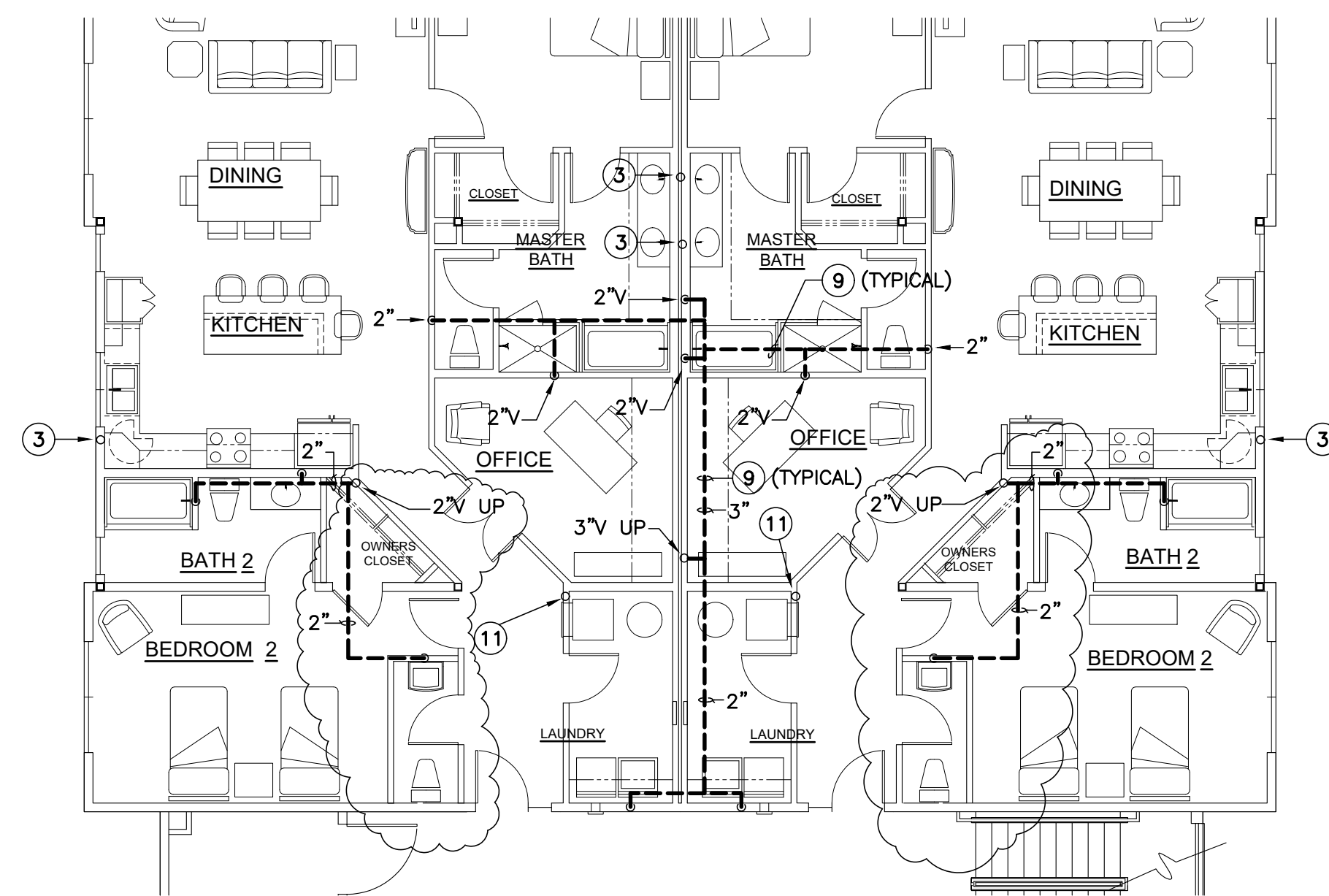
Architecture · Land Planning · Interior Design



**1 PLUMBING WASTE PLAN - SECOND FLOOR**  
 P1.2 SCALE: 1/8" = 1'-0"



**2 PLUMBING WATER PLAN - SECOND FLOOR**  
 P1.2 SCALE: 1/8" = 1'-0"



**3 PLUMBING VENT PART PLAN - SECOND FLOOR**  
 P1.2 SCALE: 1/8" = 1'-0"

**KEYNOTES:** (THIS SHEET ONLY)

- ① 3" ROOF DRAIN PIPING FROM ROOF DRAIN ABOVE AND DOWN.
- ② OMIT
- ③ 2" WASTE & VENT STACK.
- ④ 3" WASTE STACK.
- ⑤ ROUTE CW & HW MAINS IN SOFFIT.
- ⑥ 3" WASTE FROM WATER CLOSET ABOVE.
- ⑦ 2" WASTE FROM LAVATORY ABOVE.
- ⑧ 2" WASTE FROM TUB DRAIN ABOVE.
- ⑨ PIPING LOCATED IN SECOND FLOOR CEILING.
- ⑩ 3" WASTE FROM HUB DRAIN ABOVE.
- ⑪ 3" WASTE AND VENT STACK.
- ⑫ 3" HUB DRAIN WITH TRAP SEAL FOR HVAC CONDENSATE.
- ⑬ 2" WASTE FROM SHOWER DRAIN ABOVE.
- ⑭ 3" WASTE FROM WASHING MACHINE BOX ABOVE.
- ⑮ VENT RISER SEE PART PLAN.



PLOT DATE: 06/08/18  
 FILENAME: 17039P1  
 BASESHT:  
 PLOT SCALE: 1 = 96  
 MFJ

COPYRIGHT © 2018  
 PRIETTI, FORO & ASSOCIATES, INC.  
 AUGUSTA, GA 30901 (706) 722-3959

**UR**  
 USERY/RULE ARCHITECTS P.C.  
 1804-A FEDERICA ROAD  
 ST. SIMONS ISLAND, GEORGIA 31522  
 www.urarch.com  
 PH. 912-638-6688

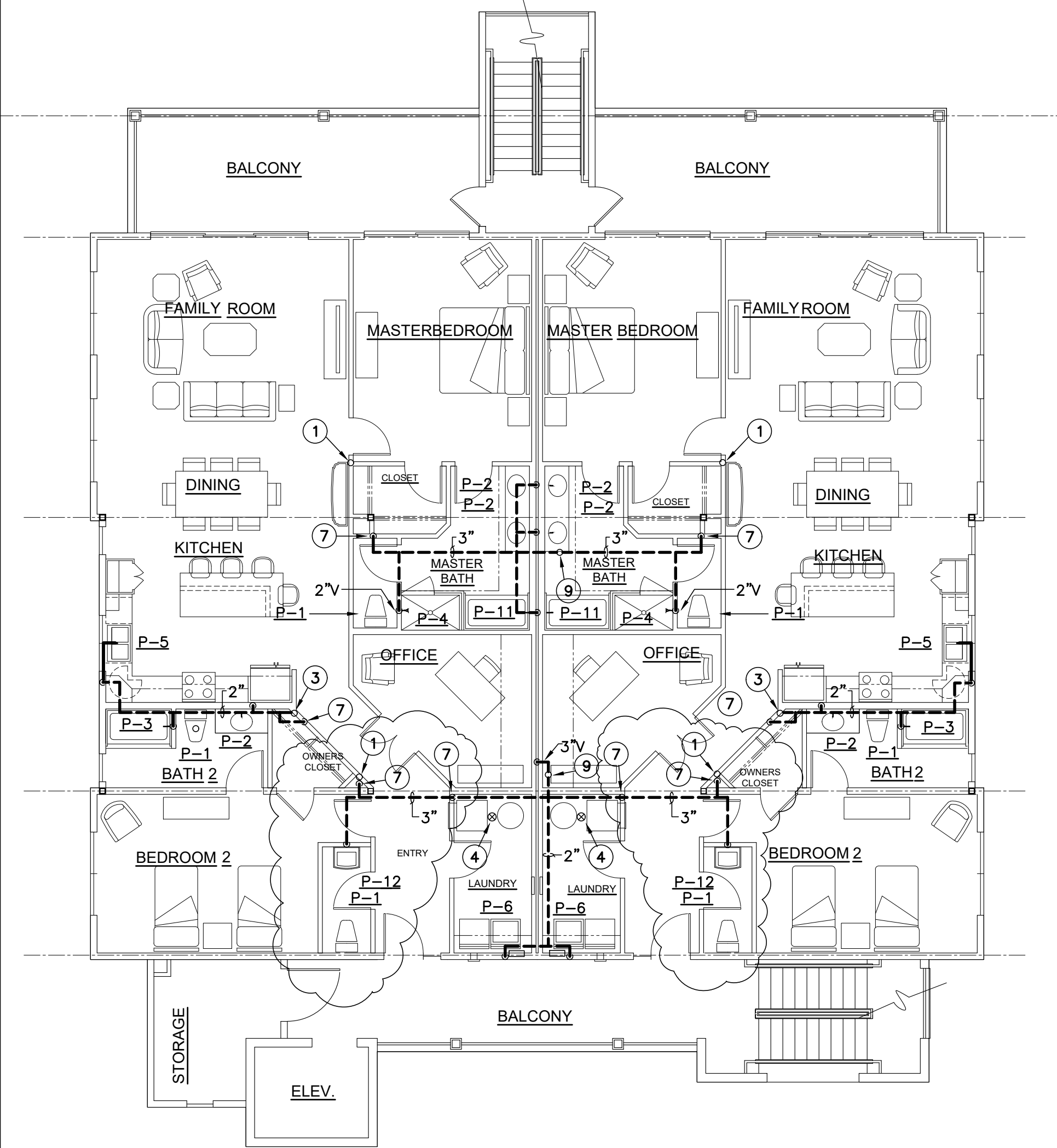
Architecture · Land Planning · Interior Design

**VIEWPOINT CONDOMINIUM**  
 LOT 6 & 7, BLOCK B, ARNOLD SUBDIVISION  
 1124 POSTELL AVENUE  
 ST. SIMONS ISLAND, GA.

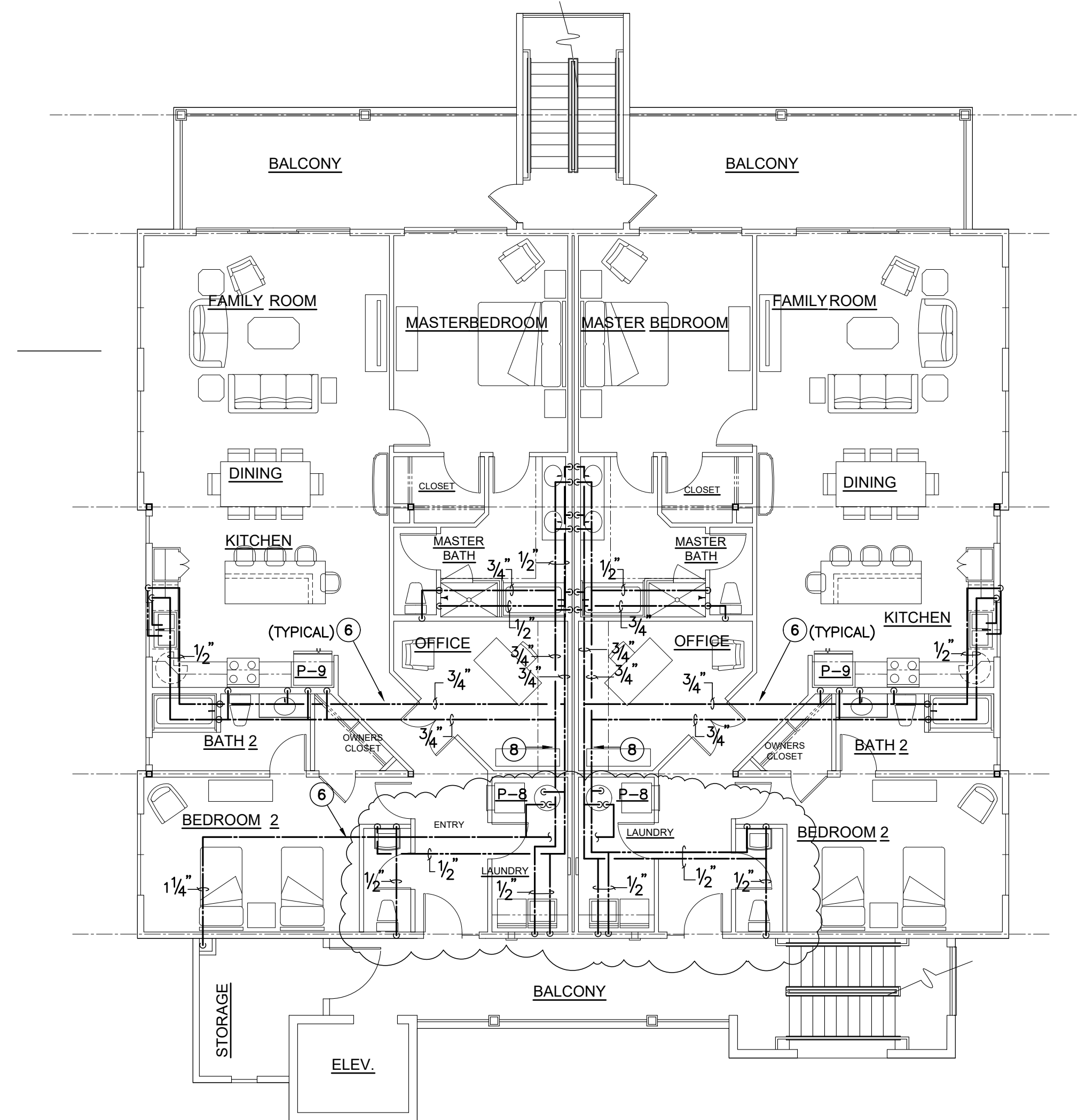
1515

08-23-17  
 06-08-18

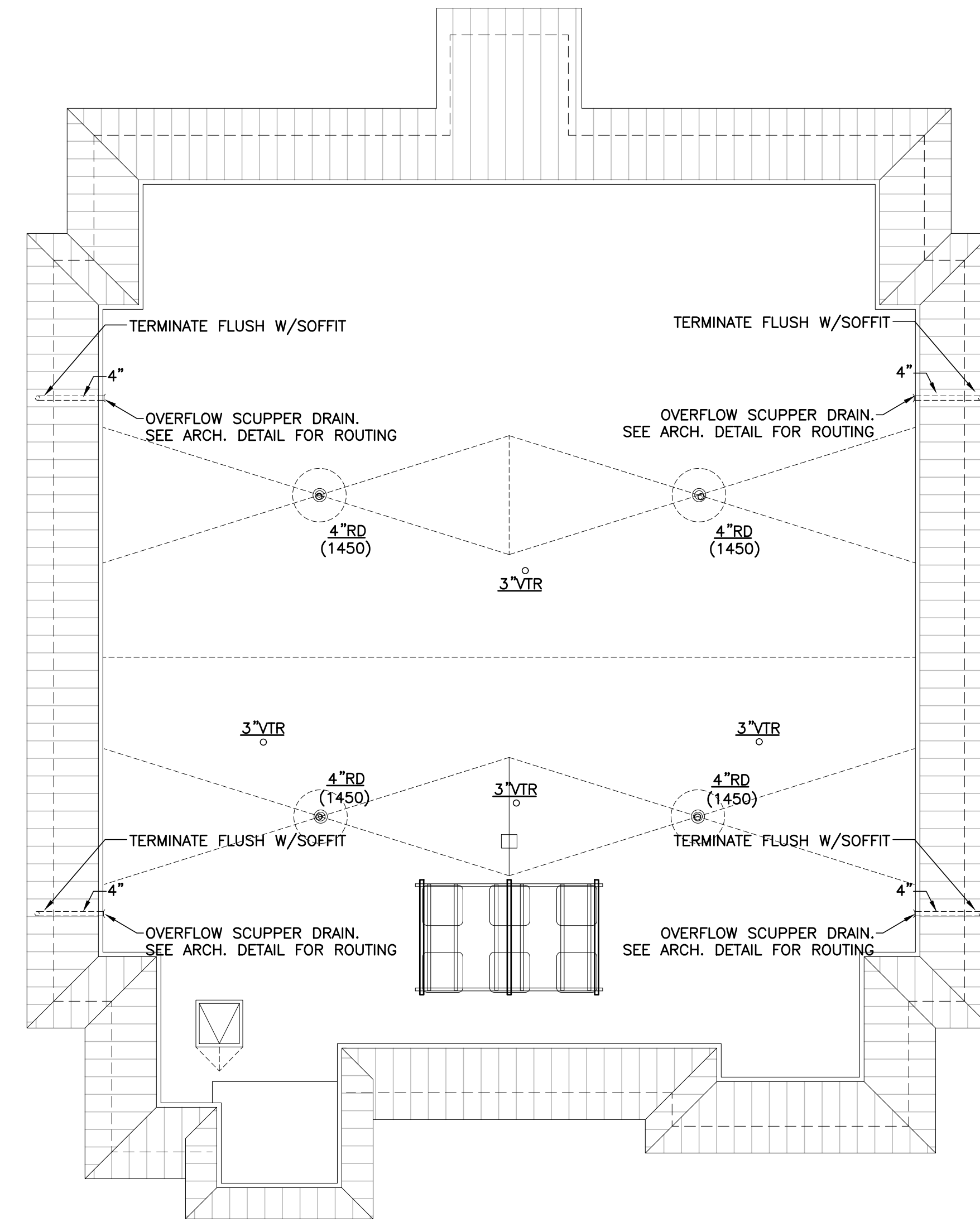
**P1.2**



**1 PLUMBING WASTE & VENT PLAN - THIRD FLOOR**  
 P1.3 SCALE: 1/8" = 1'-0"



**2 PLUMBING WATER PLAN - THIRD FLOOR**  
 P1.3 SCALE: 1/8" = 1'-0"



**3 PLUMBING PLAN - ROOF**  
 P1.3 SCALE: 1/8" = 1'-0"

**KEYNOTES:** (THIS SHEET ONLY)

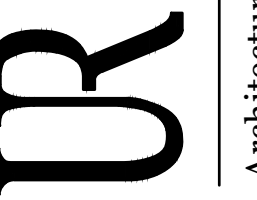
- 1 3" ROOF DRAIN PIPING FROM ABOVE AND DOWN
- 2 OMIT
- 3 3" VENT STACK UP TO 3" VTR.
- 4 3" HUB DRAIN WITH TRAP SEAL FOR HVAC CONDENSATE.
- 5 3" VENT STACK UP TO 3" VTR.
- 6 PIPING LOCATED IN THIRD FLOOR CEILING.
- 7 3" VENT OFF TOP OF WASTE STACK.
- 8 ROUTE CW & HW MAINS IN SOFFIT.
- 9 3" VTR



PLOT DATE: 06/08/18  
 FILENAME: 17039P1  
 BASESHT:  
 PLOT SCALE: 1 = 96  
 MFJ

COPYRIGHT © 2018  
 PRIETTI, FORB & ASSOCIATES, INC.  
 AUGUSTA, GA 30901 (706) 722-3959

USERY/RULE ARCHITECTS P.C.  
 1804-A FEDERICA ROAD  
 ST. SIMONS ISLAND, GEORGIA 31522  
 www.useryr.com  
 PH. 912-638-6688



Architecture · Land Planning · Interior Design

**VIEWPOINT CONDOMINIUM**  
 LOT 6 & 7, BLOCK B, ARNOLD SUBDIVISION  
 1124 POSTELL AVENUE  
 ST. SIMONS ISLAND, GA.

1515

08-23-17  
 06-08-18

**P1.3**



## PLUMBING SPECIFICATIONS

CODES, PERMITS AND FEES: CONTRACTOR SHALL PAY FOR ALL PERMITS, INSPECTION FEES, SEWER AND WATER TAP FEES REQUIRED FOR THIS PROJECT.

PLUMBING SHALL COMPLY WITH THE INTERNATIONAL PLUMBING CODE.

NATURAL GAS SYSTEM SHALL COMPLY WITH THE INTERNATIONAL FUEL GAS CODE AND GAS SERVICE PROVIDER.

GAS PIPING: SCH. 40 BLACK STEEL WITH 125 LB. MALLEABLE IRON SCREW PATTERN FITTINGS.

GAS PIPING BELOW GRADE: SCH. 40 MILL-WRAP STEEL WITH STANDARD WT. BUTT WELD FITTINGS. WRAP WELDS, VOIDS AND PIPE UP TO 12" ABOVE GRADE WITH TAPE COAT 20.

PAINT EXTERIOR EXPOSED GAS PIPING WITH ONE COAT OF PRIMER AND TWO COATS OF YELLOW ENAMEL PAINT.

GAS METER: GAS METER IS THE PROPERTY OF THE LOCAL GAS UTILITY. COORDINATE GAS PRESSURE AND VOLUME REQUIREMENTS OF GAS METER WITH LOCAL UTILITY. ALL FEES FOR METER REVISIONS SHALL BE BORNE UNDER THIS SECTION.

WASTE AND VENT PIPING: SCH. 40 PVC PIPE AND DRAINAGE PATTERN FITTINGS WITH SOLVENT WELD JOINTS.

ROOF DRAIN PIPING: SCH. 40 PVC PIPE AND DRAINAGE PATTERN FITTINGS WITH SOLVENT WELD JOINTS.

WATER PIPING: CPVC PIPING WITH SOLVENT WELD JOINTS. USE DIELECTRIC UNIONS AT CONNECTIONS TO FERROUS PIPING.

TESTS: DO NOT COVER PIPING UNTIL TESTS HAVE BEEN APPROVED BY THE OWNER'S REPRESENTATIVE.

WATER PIPING: 150 PSIG HYDROSTATIC PRESSURE FOR 4 HOURS.

WASTE AND VENT PIPING: 10 FT. HYDROSTATIC HEAD FOR 4 HOURS.

ROOF DRAIN PIPING: 10 FT. HYDROSTATIC HEAD FOR 4 HOURS.

GAS PIPING: 100 PSIG AIR PRESSURE FOR 4 HOURS. APPLY LIQUID LEAK DETECTOR TO ALL JOINTS WHILE SYSTEM IS UNDER TEST PRESSURE.

WATER VALVES: CLASS 150, 400-PSI CWP, ASTM B 584 BRONZE BODY AND BONNET, 2-PIECE CONSTRUCTION; CHROME-PLATED BRASS BALL, FULL PORT, BLOWOUT PROOF; BRONZE OR BRASS STEM; TEFLON SEATS AND SEALS.

WATER VALVES SHALL BE NIBCO S-580 OR T-580 125 LB. BALL VALVES OR EQUAL BY AMERICAN VALVE, MILWAUKEE, WATTS, APOLLO/CONBRACO, RED-WHITE OR KITZ.

GAS VALVES (COCKS): CSA CERTIFIED; FORGED BRASS BODY; CHROME PLATED FULL-PORT BALL; INCLUDE EPDM O-RING AND PTFE PACKING GLAND STEM WITH CHROME PLATED HANDLE.

GAS VALVES SHALL BE LEGEND MODEL T-2000 OR EQUAL BY NIBCO, MILWAUKEE OR WATTS.

INSULATION: INSULATE ABOVEGROUND CW AND HW PIPING WITH 3/4" CLOSED CELL EPDM INSULATION SHALL CONFORM TO ASTM E84, ASTM E96, ASTM D635, ASTM C692, ASTM C534 AND SHALL BE UV RESISTANT. SEAL ALL JOINTS WITH MANUFACTURER APPROVED ADHESIVE. MITER ALL ELBOWS.

INSULATION AS MANUFACTURED BY ARMAFLEX, ARMACELL, K-FLEX OR AEROFLEX.

INSULATION: INSULATION SHALL BE 1/2" THREE POUND PER CUBIC FOOT DENSITY PREFORMED FIBERGLASS WITH VAPOR BARRIER AND WHITE FOIL SCRIM CRAFT (ASJ) JACKET WITH GLASS FIBER THREADS. MITER ALL ELBOWS AND SEAL WITH ADHESIVE/MASTIC APPROVED FORMULATED FOR FIBERGLASS INSULATION. FITTINGS SHALL BE COVERED WITH PVC FITTING COVERS. INSULATION SHALL CONFORM TO ASTM E84.

INSULATE THE FOLLOWING:

ABOVEGROUND HOT WATER PIPING. ROOF DRAIN SUMPS. P-TRAPS ON DRAINS RECEIVING CONDENSATE.

HANGERS AND SUPPORTS: HANGERS SHALL BE SUPPORTED WITH ALL-THREAD ROD. HANGERS SHALL BE SECURED TO THE CONCRETE DECK ABOVE USING CONCRETE INSERTS. HANGERS SHALL BE ATTACHED TO THE STEEL STRUCTURE OVERHEAD WITH GRINNELL FIG. 86 "C" CLAMP. SUPPORT SPACING SHALL CONFORM TO BUILDING CODE REQUIREMENTS, PIPE MANUFACTURERS' RECOMMENDATIONS, MSS SP-58 AND MSS SP-69.

WATER PIPING: SUPPORT FROM STRUCTURE ABOVE WITH ANVIL CT-69 COPPER PLATED HANGERS OR EQUAL.

SOIL, WASTE AND VENT PIPING: SUPPORT WITH ANVIL FIG. 65 GALVANIZED CLEVIS HANGERS OR EQUAL.

ROOF DRAIN PIPING: SUPPORT WITH ANVIL FIG. 65 GALVANIZED CLEVIS HANGERS OR EQUAL.

WATER HAMMER ARRESTERS: SIOUX CHIEF OR EQUAL. WATER HAMMER ARRESTERS SHALL BE CERTIFIED WITH THE PLUMBING DRAINAGE INSTITUTE "STANDARD P.D.1. WH-201".

WATER HEATER: RESIDENTIAL MODEL WITH STEEL JACKET AND BAKED-ON ENAMEL FINISH; INCLUDE FIBERGLASS OR POLYURETHANE FOAM INSULATION JACKET. TANK SHALL INCLUDE A FACTORY INSTALLED, MAGNESIUM ANODE ROD AND COMBINATION TEMPERATURE AND PRESSURE RELIEF VALVE COMPLYING WITH ASME PTC 25.3. UNIT SHALL HAVE A 6-YEAR WARRANTY. COORDINATE VOLTAGE REQUIREMENTS WITH ELECTRICAL DIVISION.

WATER HEATERS SHALL BE MANUFACTURED BY A.O. SMITH, BRADFORD WHITE, LOCHINVAR, RHEEM, RUUD AND STATE.

EXPANSION TANK: PAINTED STEEL TANK WITH NSF/ANSI 61 BUTYL DIAPHRAGM & POLYPROPYLENE LINER.

EXPANSION TANKS SHALL BE MANUFACTURED BY AMTROL, WATTS, FLEXCON & A.O. SMITH.

PLUMBING FIXTURES & EQUIPMENT: PROVIDE PRODUCT INDICATED ON DRAWINGS OR COMPARABLE PRODUCT BY ONE OF THE FOLLOWING MANUFACTURERS:

VITREOUS CHINA AND CAST IRON FIXTURES SHALL BE MANUFACTURED AMERICAN STANDARD, KOHLER OR ZURN.

STAINLESS STEEL SINKS SHALL BE MANUFACTURED BY ADVANCE TABCO, ELKAY, JUST OR MOEN.

WATER COOLERS SHALL BE MANUFACTURED BY ELKAY, HALSEY TAYLOR OR OASIS.

FAUCETS AND SHOWERS SHALL BE MANUFACTURED BY AMERICAN STANDARD, CHICAGO, DELTA COMMERCIAL, KOHLER, MOEN COMMERCIAL, SYMONS OR ZURN.

DRAINS AND CLEANOUTS SHALL BE MANUFACTURED BY JRS, MIFAB, SMITH, WADE, WATTS OR ZURN.

FIXTURE TRAPS: CHROME PLATED QUARTER TURN STOPS WITH SOFT COPPER CHROME PLATED RISER AND CHROME ESCUTCHEON EQUAL TO BRASSCRAFT KTCS SERIES, MCGUIRE BY SERIES, WATTS 894 SERIES OR ZURN 8800 SERIES.

FIXTURE TRAPS: 17 GA. CHROME PLATED BRASS W/SLIP NUT OUTLET AND CHROME PLATED DEEP ESCUTCHEON. FOR DOUBLE BOWL SINKS, USE CONTINUOUS WASTE 17 GA. CHROME PLATED BRASS W/SLIP NUT OUTLET AND CHROME PLATED DEEP ESCUTCHEON. TRAPS SHALL BE MANUFACTURED BY MCGUIRE, DEARBORN BRASS, WATTS OR ZURN.

DRAIN TRAP SEALS: DRAIN TRAP SEALS: FITTING INSTALLS IN DRAIN BODY OUTLETS TO BLOCK SEWER GASES; ASSE 1072 COMPLIANT; HDPE OR ABS PLASTIC FRAME WITH SILICON OR EPDM SEALING GASKET.

DRAIN TRAP SEALS SHALL BE PROSET TRAPGUARDS, RECTORSEAL SURESEALS OR JONES STEPHENS GREEN DRAIN SEALS.

SUMP PUMPS:

THE SUMP PUMP SHALL BE A HEAVY DUTY SUBMERSIBLE TYPE WITH 304 STAINLESS STEEL MOTOR HOUSING AND FASTENING BOLTS. THE MECHANICAL SEALS SHALL BE HOUSED IN A SEPARATE OIL-FILLED COMPARTMENT. THE PUMP SHALL HAVE A SEMI-OPEN NON-CLOGGING VORTEX IMPELLER, AND SHALL BE DESIGNED FOR FLOOR MOUNTING COMPLETE WITH SUPPORT LEGS.

SUMPS PUMPS SHALL BE MANUFACTURED BY MYERS, ZOELLER OR EQUAL.

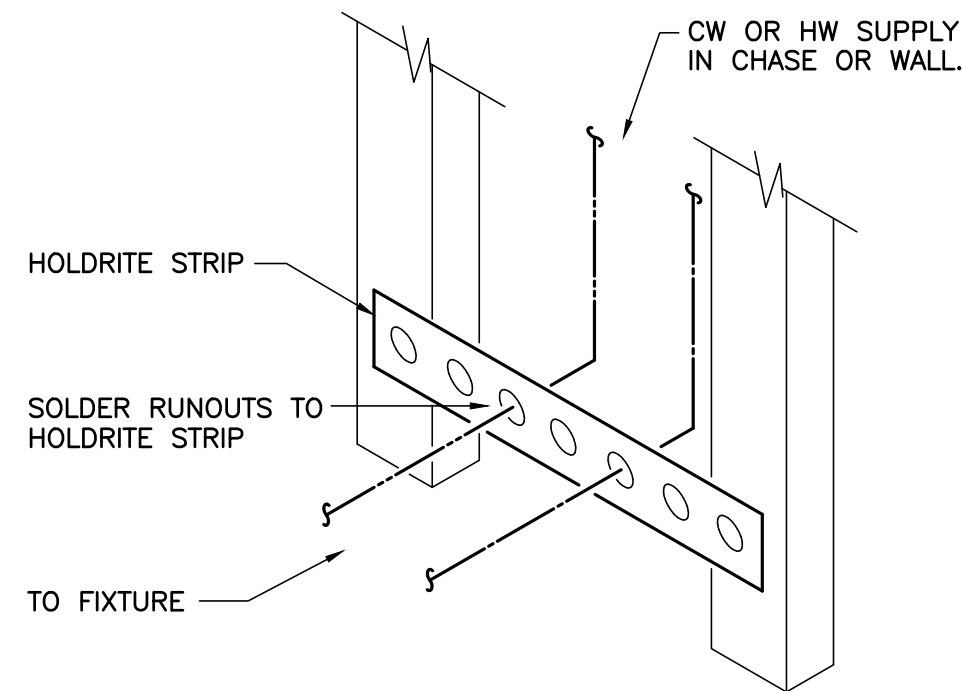
HANDICAP ACCESSIBLE FIXTURES: WHERE HANDICAP ACCESSIBLE FIXTURES ARE INDICATED ON THE FLOOR PLAN, INSTALL FIXTURES IN ACCORDANCE WITH THE ADA STANDARDS FOR ACCESSIBLE DESIGN.

INSTALLATION: PIPING SHALL RUN TRUE, STRAIGHT, PLUMB AND PARALLEL WITH WALLS; ARRANGED AS REQUIRED TO PERMIT FREE, UNRESTRAINED, NOISE-LESS EXPANSION AND CONTRACTION. UNLESS OTHERWISE NOTED, SOIL, WASTE, DRAIN AND VENT PIPING SHALL BE CONCEALED IN WALLS, PIPE CHASES, OR SHAFTS WITH CLEAN-OUTS EXTENDED TO ACCESSIBLE LOCATIONS. ALL PLUMBING FIXTURES SHALL BE PROPERLY VENTED TO PREVENT SIPHONING OF TRAPS.

ELECTRICAL: THE EQUIPMENT VOLTAGE, PHASE AND AMPACITY REQUIREMENTS FOR THE EQUIPMENT MUST BE VERIFIED BY THE CONTRACTOR AGAINST THE POWER SUPPLY PROVIDED. COORDINATE POWER AND WIRING REQUIREMENTS WITH ELECTRICAL DIVISION. MODEL NUMBERS LISTED IN MECHANICAL EQUIPMENT SCHEDULE SHALL NOT BE CONSTRUED TO INDICATE ELECTRICAL CHARACTERISTICS. POWER WIRING AND DISCONNECTS SHALL BE PROVIDED UNDER ANOTHER DIVISION.

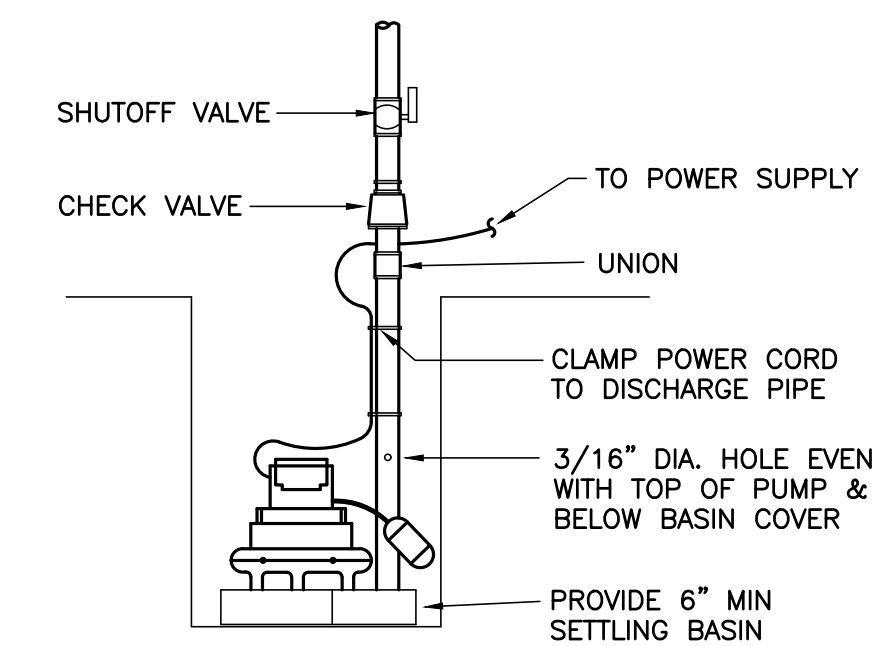
DISINFECTATION OF PLUMBING PIPING: SUBMIT STATEMENT FROM A TESTING LABORATORY THAT IS ACCEPTABLE TO LOCAL HEALTH DEPARTMENT THAT THE SPECIFIED DISINFECTATION PROCEDURE HAS BEEN COMPLETED SATISFACTORILY.

OPERATING AND MAINTENANCE MANUALS: PROVIDE 3 SETS OF MANUALS CONTAINING OPERATING AND MAINTENANCE INSTRUCTIONS AS WELL AS WARRANTIES FOR PLUMBING EQUIPMENT SUCH AS WATER HEATERS AND PUMPS.



### 1 RUNOUT ANCHOR DETAILS

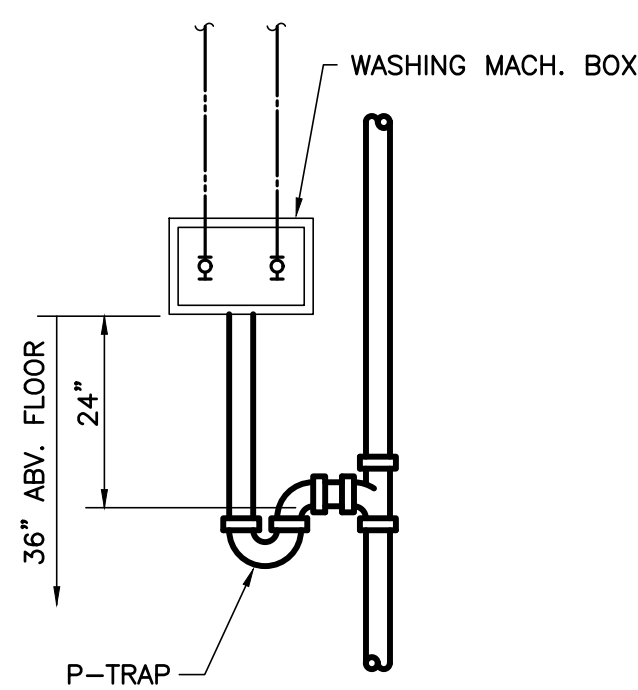
P2.0 SCHEMATIC



NOTE: THIS DETAIL IS A SCHEMATIC ONLY. COORDINATE INSTALLATION WITH ACTUAL JOB CONDITIONS.

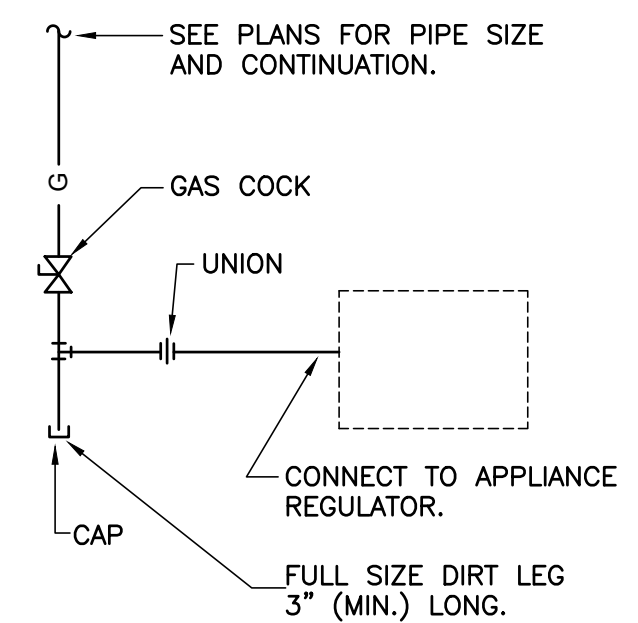
### 2 SUMP PUMP INSTALLATION DETAIL

P2.0 SCHEMATIC ONLY



### 3 WASHING MACHINE BOX DETAIL

P2.0 SCHEMATIC ONLY



### 4 GAS DIRT LEG DETAIL

P2.0 NOT TO SCALE

## PLUMBING FIXTURE SCHEDULE

SYMBOL	FIXTURE	WASTE CONN. BRANCH		VENT	COLD WATER	HOT WATER	RIM HGT. BASIS OF DESIGN FIXTURE	DESCRIPTION
		3"	2"					
P-1	WATER CLOSET (FLUSH TANK)	3"	2"	1/2"	-	17"		KOHLER K-3814-RA-0 WITH K-4008 QUIET CLOSE SEAT
P-2	LAVATORY (UNDERMOUNT)	1-1/4"	1-1/2"	1/2"	1/2"	DECK		KOHLER K-20000-0, DELTA DRYDEN 3551LF FAUCET WITH DRAIN (6)
P-3	TUB/SHOWER	2"	1-1/2"	1/2"	1/2"	-		KOHLER K-1123-LA/RA-0 TUB DELTA T14451 SHOWER & TUB TRIM DELTA R10000-UNWS VALVE BODY DELTA RP31558 DRAIN & OVERFLOW (9)
P-4	SHOWER	2"	1-1/2"	1/2"	1/2"	(1)		DELTA T14251 SHOWER TRIM DELTA R10000-UNWS VALVE BODY OATEY 130 SERIES DRAIN (6)
P-5	KITCHEN SINK	1-1/2"	1-1/2"	1/2"	1/2"	DECK		KOHLER K-6427-0, DELTA 9197-DST FAUCET, DELTA 72010 STRAINER (2)(4)(6)
P-6	WASHING MACHINE BOX	2"	2"	1/2"	1/2"	36"		OATEY 38103 W/HAMMER ARRESTORS
P-7	SUMP PUMP	1-1/4"	-	-	-	-		MYERS ME45MC-11, 1/2 H.P., 50 GPM @ 20FT. HEAD
P-8	WATER HEATER	-	-	3/4"	3/4"	-		RHEEM PRO+E50 M2 RH95 EC1 50 GAL., 4.5 KW INPUT (8)(5)
P-9	ICE MAKER BOX	-	-	1/2"	-	12"		WATERTITE 9000
P-10	REMOTE SHOWER WAND	-	-	-	1/2"	(1)		DELTA 51552 HAND SHOWER WITH SLIDE BAR, W/T11851 DIVERTER AND RP71717 CARTRIDGE (7)(6)
P-11	TUB	2"	1-1/2"	1/2"	1/2"	-		KOHLER K-1123-0 TUB, DELTA T14051 HANDLE & RP54323PN SPOUT DELTA R10000-UNWS VALVE BODY DELTA RP31558 DRAIN & OVERFLOW (9)
P-12	LAVATORY	1-1/4"	1-1/2"	1/2"	1/2"	-		KOHLER K-2359-8-0 PEDESTAL LAV DELTA DRYDEN 3551LF FAUCET WITH DRAIN (6)
CO-1	CLEANOUT (INTERIOR)	-	-	-	-	-		OATEY 74000 SERIES
CO-2	CLEANOUT (EXTERIOR)	-	-	-	-	-		SMITH 4292 (UNPAVED AREA) SMITH 4031 (PAVED AREA)
CO-3	CLEANOUT (EXTERIOR HEAVY DUTY)	-	-	-	-	-		SMITH 4238
WH	WALL HYDRANT	-	-	3/4"	-	-		WOODFORD 26 W/METAL HANDLE
RD	ROOF DRAIN	-	-	-	-	-		OATEY 78000 SERIES
FD-1	FLOOR DRAIN (GENERAL)	-	-	-	-	-		OATEY 72000 SERIES (3)

### PLUMBING FIXTURE SCHEDULE KEYNOTES

- RIM HEIGHT FOR GUIDANCE ONLY. SEE ARCHITECTS DRAWINGS FOR EXACT MOUNTING HEIGHT. ROUGH WATER AND SANITARY CONNECTION AS REQUIRED. RIM HEIGHT INCLUDES SPECIFIED SEAT ON WATER CLOSETS.
- PROVIDE BADGER 1 GARBAGE DISPOSAL.
- PROVIDE PROSET TRAP GUARD.
- PROVIDE DISHWASHER CONNECTION, INCLUDE DUAL OUT STOP ON HW SUPPLY.
- PROVIDE GALVANIZED DRAIN PAN.
- FAUCET AND DRAIN FINISHES SHALL BE SELECTED BY OWNER. DRAIN FINISHES SHALL MATCH FAUCET FINISHES.
- INSTALL DIVERTER AT SHOWER VALVE AND ROUTE SUPPLY FROM DIVERTER TO SHOWER WAND AT FIRST FLOOR MASTER SHOWER ENCLOSURES.
- PROVIDE EXPANSION TANK EQUAL TO AMTROL ST-5.
- CONFIRM TUB ORIENTATION WITH ARCHITECTURAL DRAWINGS.

## PLUMBING LEGEND

SYMBOL	DESCRIPTION	SYMBOL	DESCRIPTION
---	SOIL, WASTE, OR SANITARY SEWER	⊘	SHUTOFF VALVE
----	VENT	⊙	CLEANOUT
VTR	VENT THRU ROOF	HD	HUB DRAIN
---	COLD WATER	PDI'X'	WATER HAMMER ARRESTOR
---	HOT WATER	WH	WALL HYDRANT
⊘	SHUTOFF VALVE IN RISER	RDL	ROOF DRAIN LINE
WCO	WALL CLEANOUT	G	NATURAL GAS

1/4 1/2 3/4 REFERENCE SCALE

PLOT DATE: 06/08/18  
FILENAME: 17039P1  
BASESHT:  
PLOT SCALE: 1 = 96  
MFJ

COPYRIGHT © 2018  
PRIETTI, FORO & ASSOCIATES, INC.  
AUGUSTA, GA 30901 (706) 722-3959

## GENERAL PLUMBING NOTES

EXACT LOCATIONS AND ROUGHING REQUIREMENTS FOR ALL FIXTURES AND EQUIPMENT SHALL BE DETERMINED FROM ARCHITECTURAL DRAWINGS, LARGE SCALE ARCHITECTURAL DETAILS AND APPROVED MANUFACTURER'S SHOP DRAWINGS. PARTICULAR ATTENTION SHALL BE DIRECTED TO FIXTURES OR EQUIPMENT FURNISHED UNDER OTHER DIVISIONS.

INVERT ELEVATIONS SHOWN SHALL BE VERIFIED ON THE JOB BEFORE INSTALLING ANY NEW PIPE.

INSTALL TEST-TEES WHEN THE SANITARY SEWER SYSTEM IS TO BE TESTED IN SECTIONS.

PIPING IS SHOWN IN ITS GENERAL LOCATION (UNLESS DIMENSIONED). EXACT LOCATION SHALL BE DETERMINED BY JOB CONDITIONS. CONTRACTOR SHALL COORDINATE THE INSTALLATION OF HIS WORK WITH THAT OF OTHER TRADES AND ARRANGE PIPING TO CLEAR STRUCTURAL MEMBERS AND DUCTWORK.

RISERS FOR FIXTURES, UNLESS OTHERWISE NOTED, SHALL BE CONCEALED IN WALLS OR PIPE CHASES.

REFER TO ARCHITECTURAL FINISH SCHEDULE AND ELEVATIONS FOR DETAILS OF FLOORS WHERE FLOOR DRAINS AND CLEANOUTS ARE LOCATED.

INSTALL EXTERIOR WALL HYDRANTS 18" ABOVE FINISH GRADE, EXCEPT AS NOTED OTHERWISE.

PROVIDE SLEEVES FOR PIPES PASSING THRU FLOORS, MASONRY WALLS AND FIRE OR SMOKE PARTITIONS. PACK ANNULAR SPACE BETWEEN PIPE WITH MATERIAL APPROVED IN U.L. BUILDING DIRECTORY.

USERY/RULE ARCHITECTS P.C.  
1804-A FREDERICA ROAD  
ST. SIMONS ISLAND, GEORGIA 31522  
www.useryrule.com  
PH. 912-638-6688

UR

Architecture · Land Planning · Interior Design

VIEWPOINT CONDOMINIUM  
LOT 6 & 7, BLOCK B, ARNOLD SUBDIVISION  
1124 POSTELL AVENUE  
ST. SIMONS ISLAND, GA.

1515

08-23-17  
06-08-18

P2.0