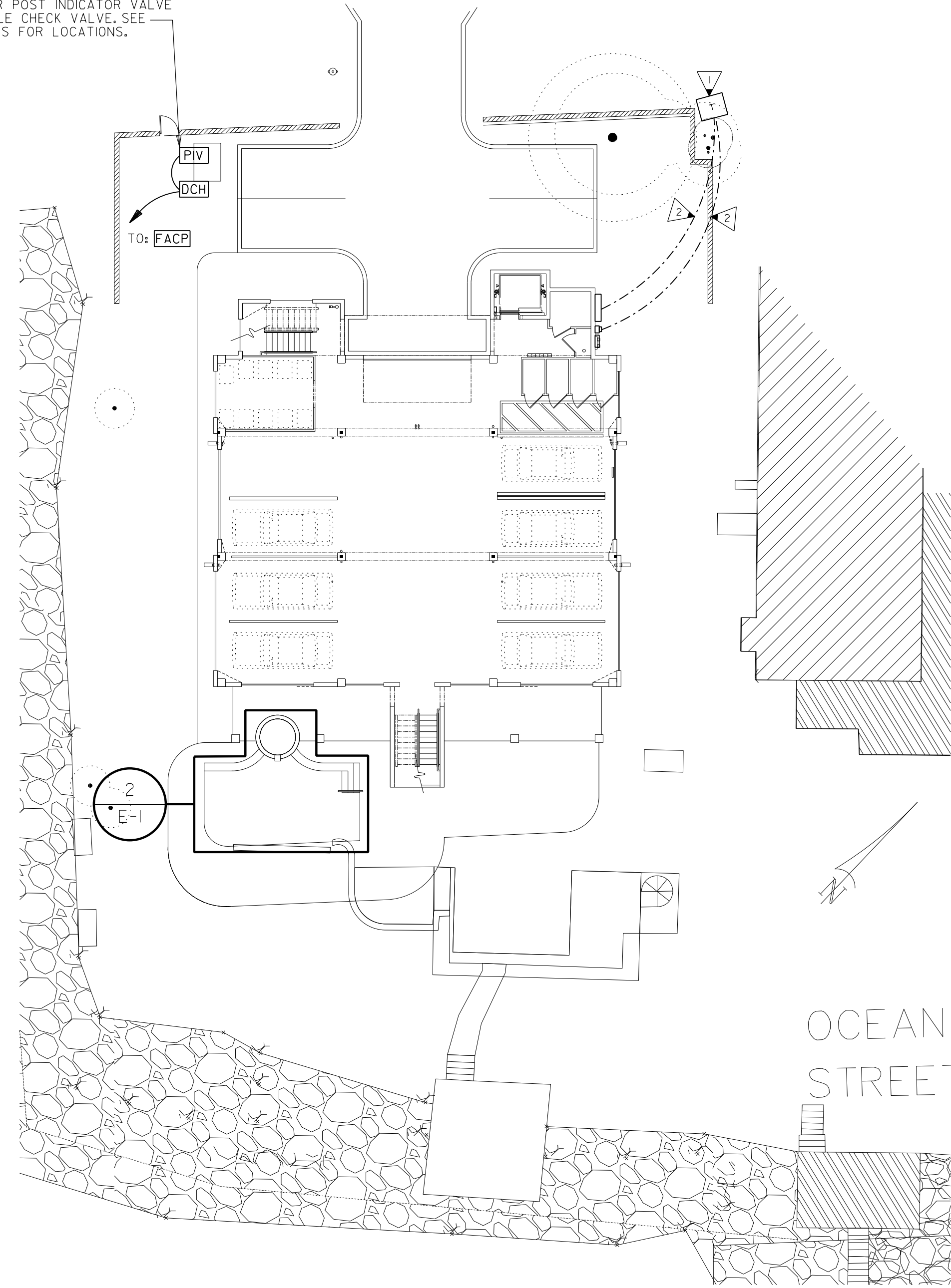


2  
E-1  
HOT TUB & POOL AREA - ELECTRICAL  
SCALE: 1/8" = 1'-0"  
0 4' 8'

**KEYED NOTES:** (DETAIL 2/E-1 ONLY)

- ▶ BOND POOL GROUNDING GRID TO ELECTRICAL POWER SYSTEM GROUND.
- ▶ BOND TO ALL METAL ELEMENTS OF POOL.
- ▶ POOL LIGHTS PROVIDED BY MANUFACTURER, RACEWAY AND POWER FEED TO PANEL "HP" PROVIDED BY CONTRACTOR. COORDINATE EXACT FIXTURE QUANTITIES, LOCATIONS AND EXACT REQUIREMENTS WITH POOL MANUFACTURER PRIOR TO ROUGH-IN.
- ▶ 5/8 IN. x 10 FT. COPPER CLAD STEEL GROUNDING ROD.
- ▶ CONNECT TO TIMER SWITCH SHOWN ON SHEET E-2.
- ▶ PROVIDE 30A/2P/3R DISCONNECT MOUNTED ON PRESSURE TREATED 4X4 POST (POST TO BE 3FT. IN GROUND) 36 IN. AFF TO BOTTOM OF DISCONNECT FOR POWER TO HOT TUB. COORDINATE EXACT LOCATION AND REQUIREMENTS WITH HOT TUB MANUFACTURER/OWNER. ROUTE THROUGH HOT TUB TIMER (PROVIDED BY HOT TUB SUPPLIER) AS REQUIRED. \*10'S ENTIRE CIRCUIT.
- ▶ PROVIDE 30A/2P/3R DISCONNECT MOUNTED ON PRESSURE TREATED 4X4 POST (POST TO BE 3FT. IN GROUND) 36 IN. AFF TO BOTTOM OF DISCONNECT FOR POWER TO POOL. COORDINATE EXACT LOCATION AND REQUIREMENTS WITH POOL MANUFACTURER/OWNER. ROUTE THROUGH POOL TIMER (PROVIDED BY POOL SUPPLIER) AS REQUIRED. \*10'S ENTIRE CIRCUIT.

PROVIDE MOUNTING MODULES AND CONNECTION TO FIRE ALARM CONTROL PANEL FOR POST INDICATOR VALVE AND DOUBLE CHECK VALVE. SEE CIVIL PLANS FOR LOCATIONS.



1  
E-1  
SITE PLAN - ELECTRICAL  
SCALE: 1/16" = 1'-0"  
0 8' 16'

**GENERAL NOTES - LOCATION OF UTILITY COMPANY PAD MOUNTED TRANSFORMER:**

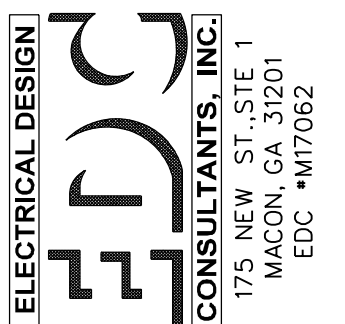
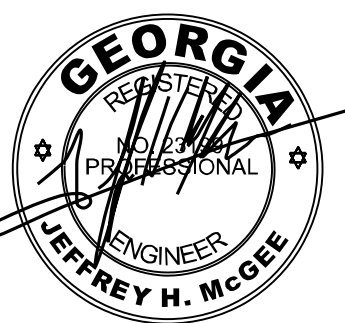
1. TRANSFORMER PAD LOCATIONS SHALL BE A MINIMUM OF 10 FT.-0 IN. FROM ANY BUILDING OVERHANGS, CANOPIES, EXTERIOR WALLS, BALCONY, EXTERIOR STAIRS AND OR WALKWAYS CONNECTED TO THE BUILDING.
2. TRANSFORMER PAD EDGE SHALL BE NO LESS THAN 14 FT.-0 IN. FROM ANY DOOR WAY.
3. TRANSFORMER PAD EDGE SHALL BE NO LESS THAN 10 FT.-0 IN. FROM ANY WINDOWS OR OTHER OPENINGS.
4. IF THE BUILDING HAS AN OVERHANG THE 10 FT.-0 IN. CLEARANCE SHALL BE MEASURED FROM A POINT BELOW THE EDGE OF THE OVERHANG ONLY IF THE BUILDING IS 3 STORIES OR LESS. IF THE BUILDING IS 4 STORIES OR MORE 10 FT.-0 IN. SHALL BE MEASURED FROM THE OUTSIDE BUILDING WALL.
5. FIRE ESCAPES, OUTSIDE STAIRS, AND COVERED WALKWAYS ATTACHED TO OR BETWEEN BUILDINGS, SHALL BE CONSIDERED PART OF THE BUILDING.

**GENERAL NOTES:**

- A. SURVEY AND SITE INFORMATION PROVIDED BY OTHERS. VERIFY ALL CONDITIONS ON SITE AND WITH OFFICIAL SURVEYS AND OTHER TRADES.
- B. CALL UNDERGROUND UTILITY CENTER AND VERIFY ALL UNDERGROUND UTILITIES.
- C. UNDERGROUND CONDUIT SHALL BE SCHEDULE 80 PVC.
- D. COORDINATE WITH SERVING UTILITY COMPANIES FOR EXACT SERVICE LOCATIONS. CONTRACTOR SHALL PAY ALL ADDITIONAL COST TO PROVIDE SERVICES SHOWN.
- E. PROVIDE HAND-HOLES AS REQUIRED BY 2014 NEC FOR UNDERGROUND FEEDERS SHOWN.
- F. 1 IN. MINIMUM FOR SITE LIGHTING FEEDERS.

**KEYED NOTES:** (DETAIL 1/E-1 ONLY)

- ▶ PROPOSED UTILITY CO. PAD MOUNTED TRANSFORMER. TRANSFORMER FURNISHED AND INSTALLED BY UTILITY CO. CONTRACTOR TO PAY ALL COSTS ASSOCIATED WITH. SEE GENERAL TRANSFORMER NOTES ON THIS SHEET.
- ▶ SEE POWER RISER DIAGRAM, 1/E-5.



**USSERY/RULE ARCHITECTS P.C.**  
1804-A FREDERICA ROAD  
ST. SIMONS ISLAND, GEORGIA 31522  
www.urarch.com  
PH. 912-638-6688

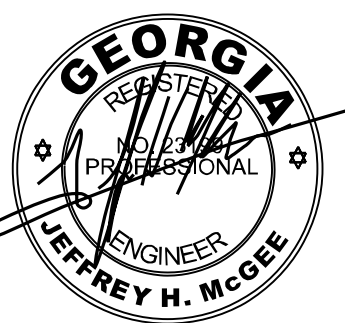
Architecture · Land Planning · Interior Design

**VIEWPOINT CONDOMINIUM**  
LOT 6 & 7, BLOCK B, ARNOLD SUBDIVISION  
1124 POSTELL AVENUE  
ST. SIMONS ISLAND, GA.

1515  
8-25-17

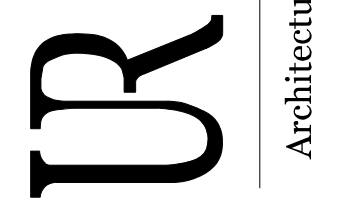
**E-1**





**ELECTRICAL DESIGN CONSULTANTS, INC.**  
 175 NEW ST., STE. 1  
 MACON, GA 31201  
 EDC - #17062

**USSERY/RULE ARCHITECTS P.C.**  
 1804-A FREDERICA ROAD  
 ST. SIMONS ISLAND, GEORGIA 31522  
 www.urarch.com  
 PH. 912-638-6688

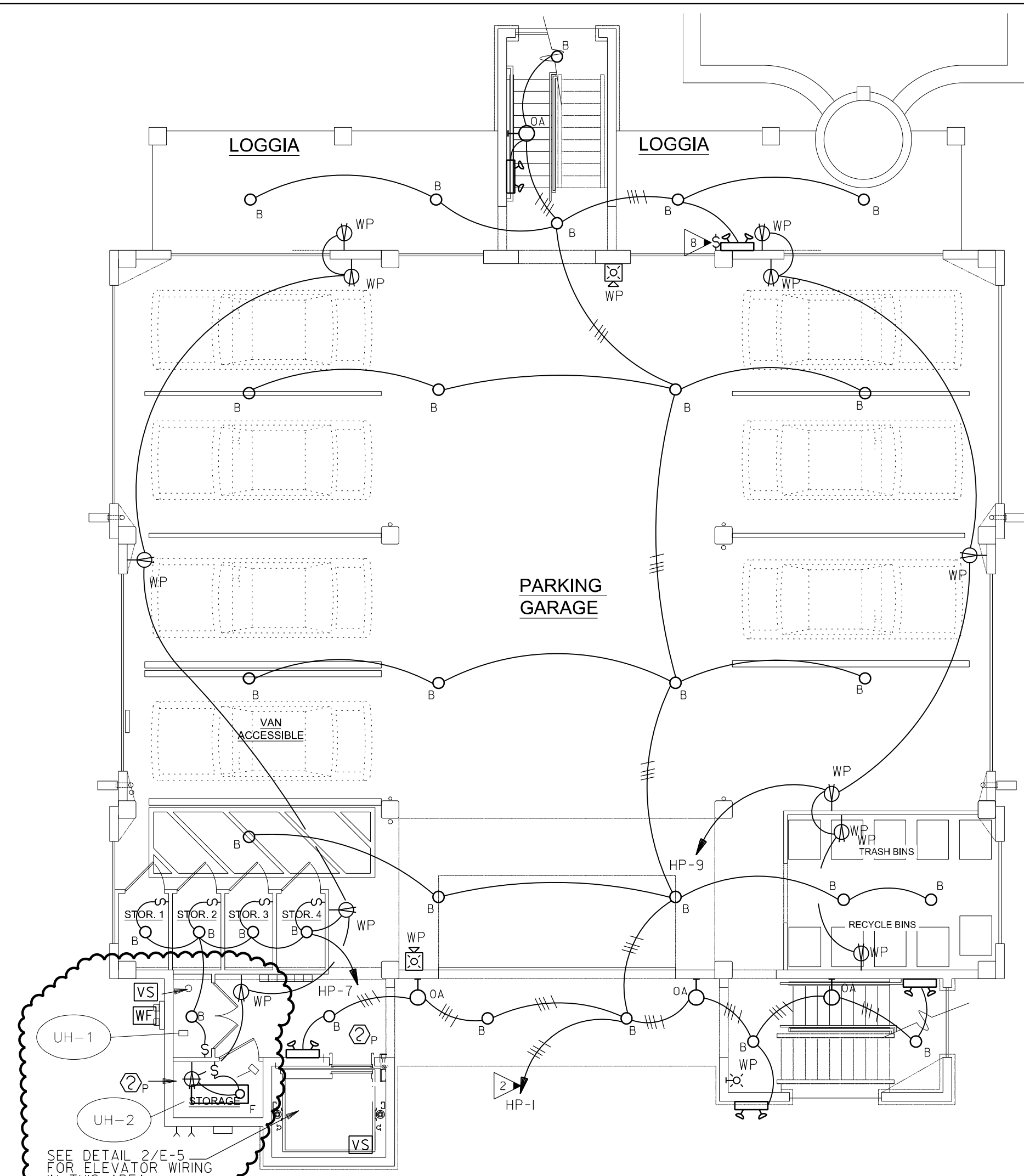


Architecture · Land Planning · Interior Design

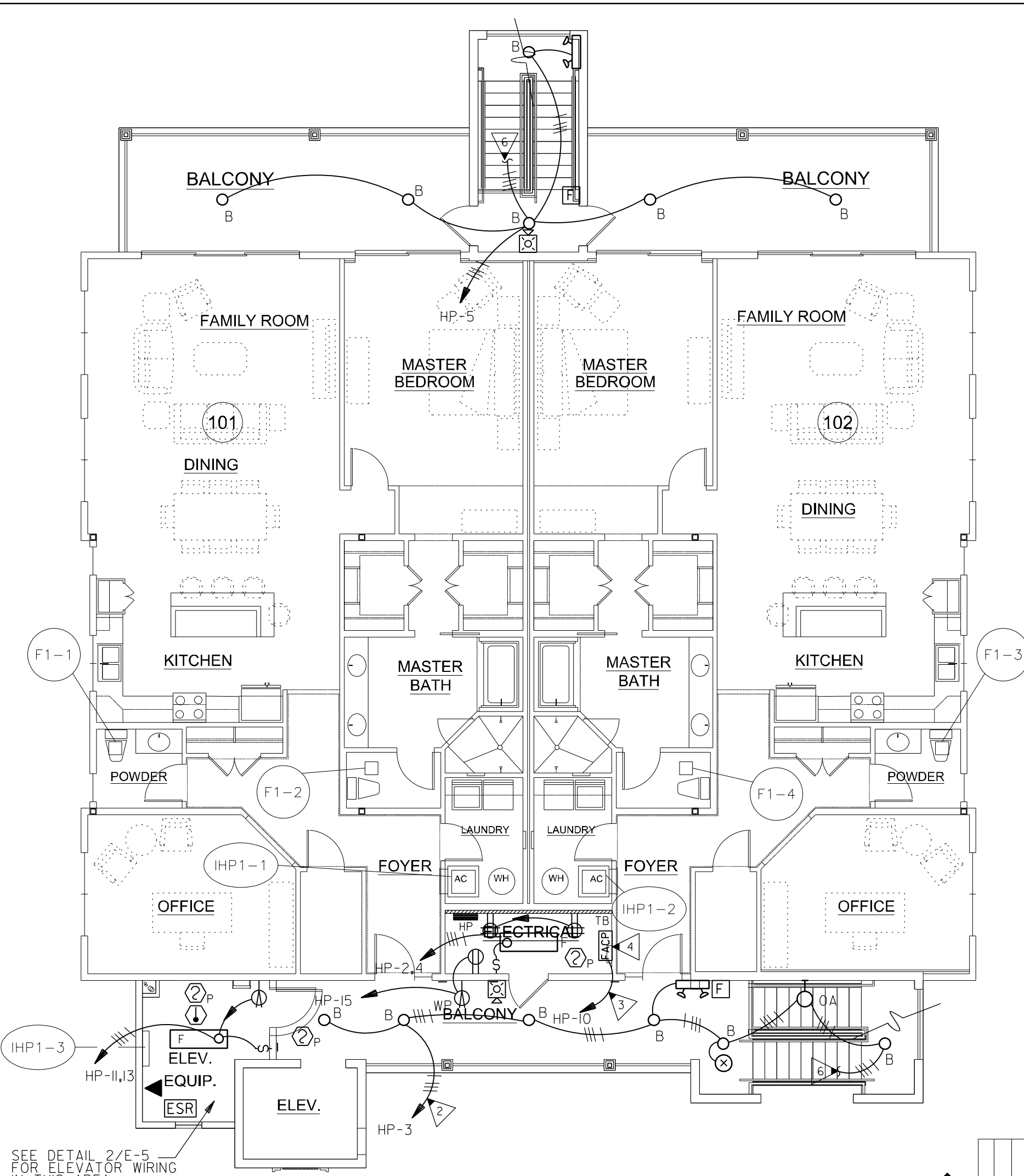
**VIEWPOINT CONDOMINIUM**  
 LOT 6 & 7, BLOCK B, ARNOLD SUBDIVISION  
 1124 POSTELL AVENUE  
 ST. SIMONS ISLAND, GA.

1515  
 8-25-17  
 11-08-17  
 6-08-18

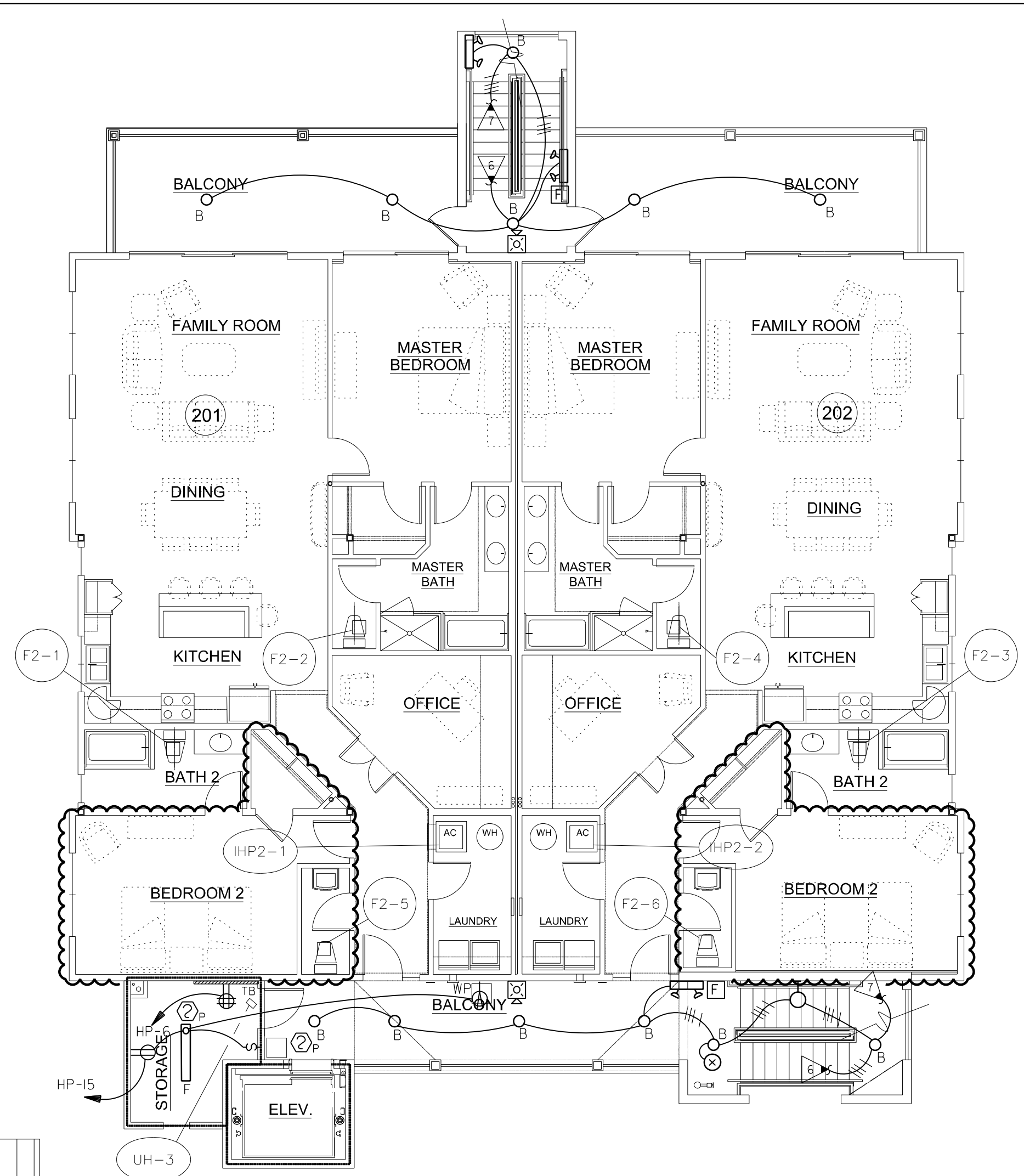
**E-2**



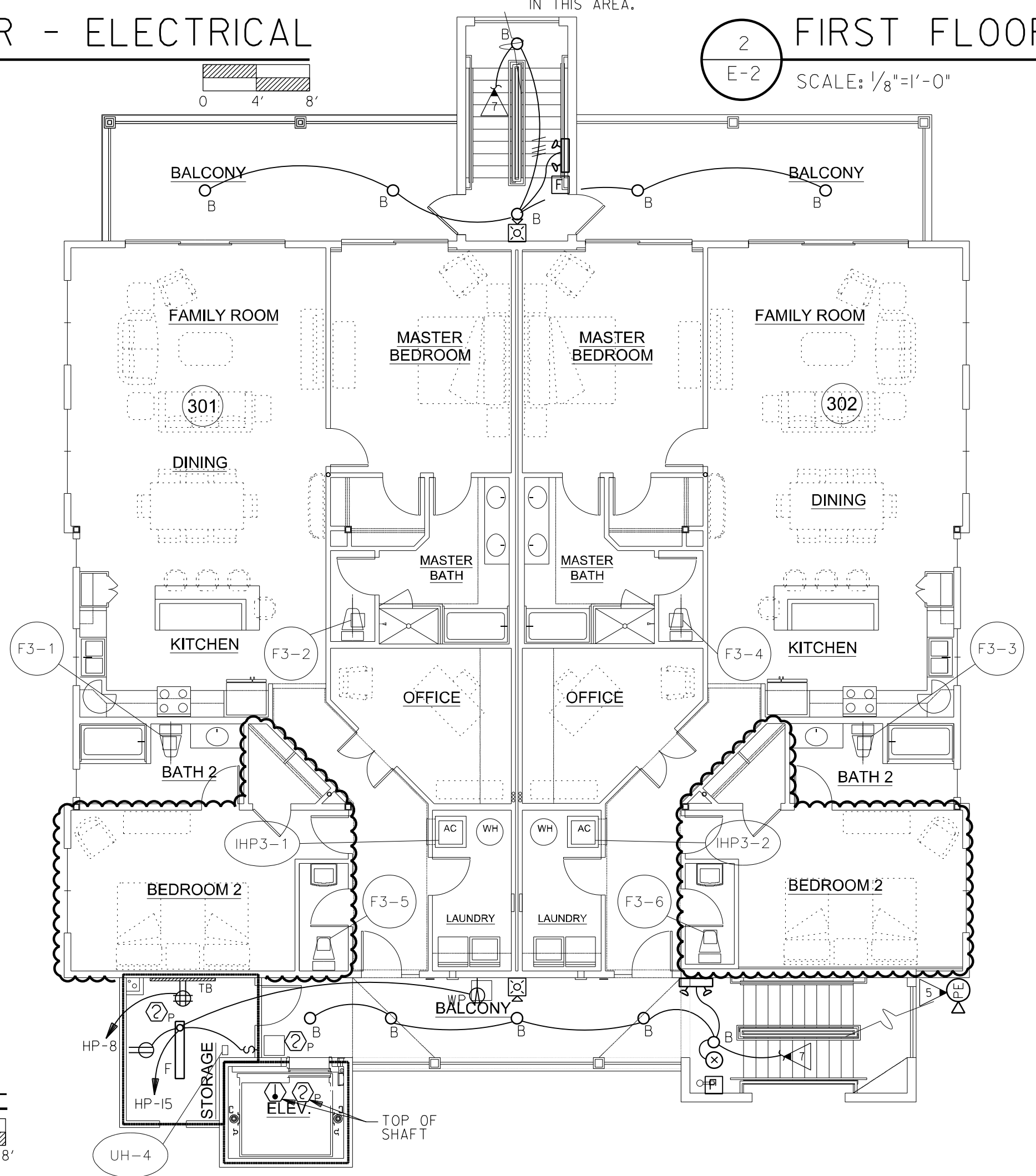
**1 GROUND FLOOR - ELECTRICAL**  
 E-2 SCALE: 1/8"=1'-0"



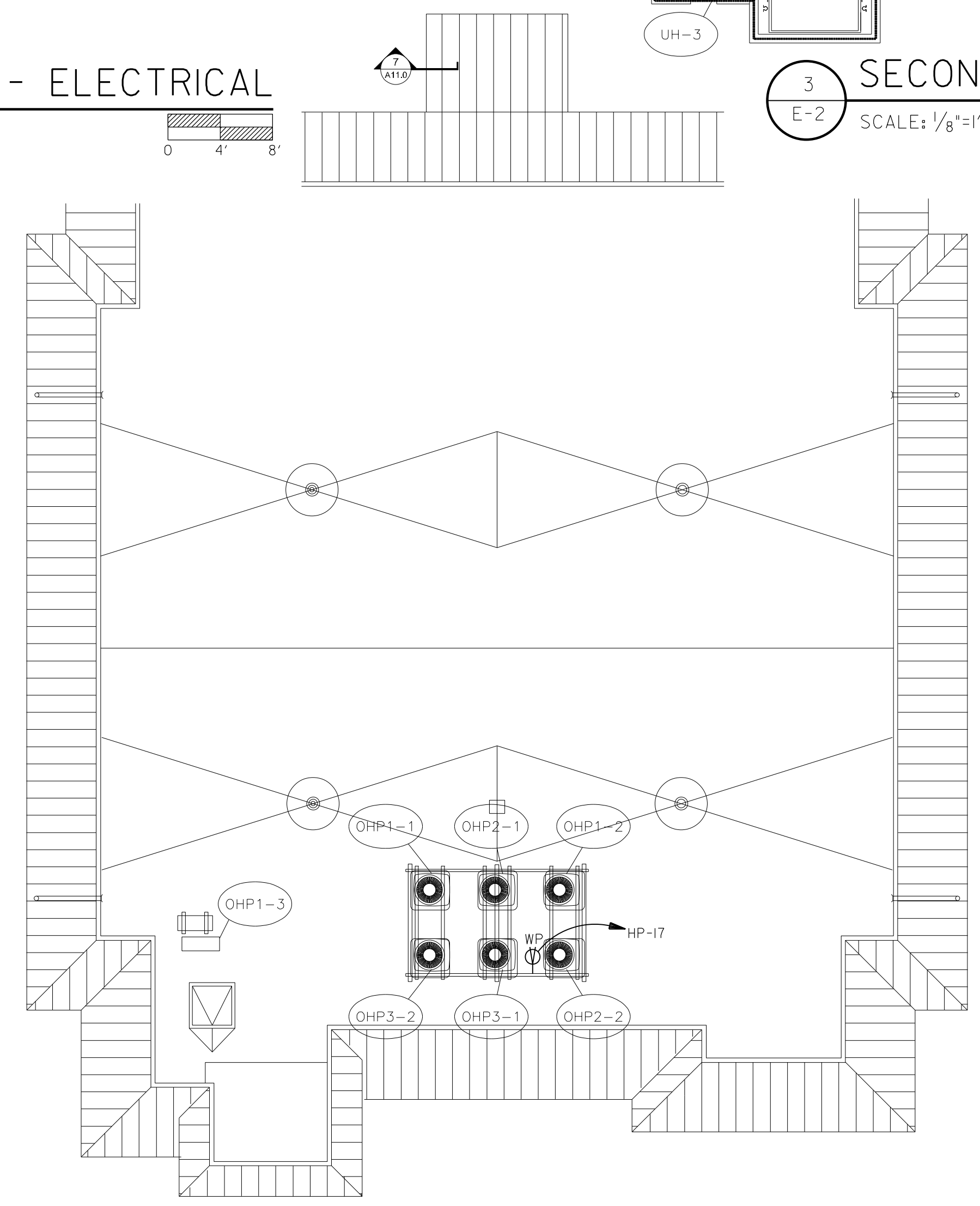
**2 FIRST FLOOR - ELECTRICAL**  
 E-2 SCALE: 1/8"=1'-0"



**3 SECOND FLOOR - ELECTRICAL**  
 E-2 SCALE: 1/8"=1'-0"

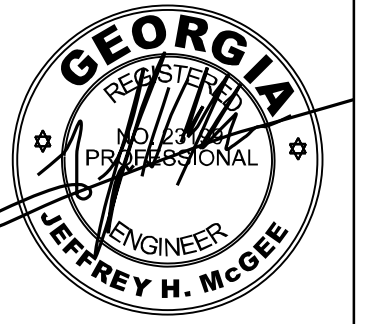


**4 THIRD FLOOR - ELECTRICAL**  
 E-2 SCALE: 1/8"=1'-0"



**5 ROOF PLAN - ELECTRICAL**  
 E-2 SCALE: 1/8"=1'-0"

- KEYED NOTES:** (THIS SHEET ONLY)
- 1. COORDINATE MOUNTING HEIGHT WITH ARCHITECTURAL ELEVATIONS.
  - 2. ROUTE VIA EXTERIOR PHOTOCELL/ TIME CLOCK. TIME CLOCK TO BE LOCATED ADJACENT PANEL HP. PHOTOCELL SHALL CONTROL DUSK TILL DAWN OPERATION, TIME CLOCK TO BE ASTRONOMICAL, DIGITAL, 24 HOUR, WITH SKIP A DAY CAPABILITY. \*10'S ENTIRE CIRCUIT.
  - 3. FIRE ALARM CONTROL PANEL LABEL BREAKERS SERVING FIRE ALARM PANEL WITH RED NAMEPLATE "FIRE ALARM CIRCUIT." LABEL FIRE ALARM PANEL WITH CIRCUIT NUMBER SERVING IT.
  - 4. PROVIDE FIRE ALARM DOCUMENT CABINET ADJACENT TO THE FIRE ALARM CONTROLLER PANEL PER NFPA 72.
  - 5. ROUTE VIA EXTERIOR PHOTOCELL/ TIME CLOCK. TIME CLOCK TO BE LOCATED ADJACENT PANEL HP. PHOTOCELL SHALL CONTROL DUSK TILL DAWN OPERATION, TIME CLOCK TO BE ASTRONOMICAL, DIGITAL, 24 HOUR, WITH SKIP A DAY CAPABILITY. \*10'S ENTIRE CIRCUIT.
  - 6. TO ABOVE.
  - 7. TO BELOW.
  - 8. TIMER SWITCH FOR CONTROL OF POOL LIGHTING. COORDINATE EXACT LOCATION WITH ARCHITECT.
- GENERAL NOTES:** (THIS SHEET ONLY)
- A. COORDINATE EXACT LOCATIONS OF ALL MECHANICAL EQUIPMENT PRIOR TO MECHANICAL ROUGH-IN.
  - B. ALL FLEXIBLE CONDUIT SHALL BE METALLIC WATERPROOF.
  - C. COORDINATE FINAL RECEPTACLE AND VOICE/DATA OUTLET LOCATIONS WITH ARCHITECTURAL CASEWORK AND OWNER PRIOR TO ROUGH-IN. NO EXCEPTIONS.
  - D. COORDINATE EXACT CONDUIT REQUIREMENTS FOR THERMOSTATS TO ALL AIR HANDLING UNITS. SEE MECHANICAL DRAWINGS FOR EXACT LOCATIONS.
  - E. FIRE SEAL ALL FIREWALL PENETRATIONS.



ELECTRICAL DESIGN  
**EDC**  
 CONSULTANTS, INC.  
 175 NEW ST., STE. 1  
 MACON, GA 31201  
 EDC #170062

**USSERY/RULE ARCHITECTS P.C.**  
 1804-A FREDERICA ROAD  
 ST. SIMONS ISLAND, GEORGIA 31522  
 www.urarch.com PH. 912-638-6688

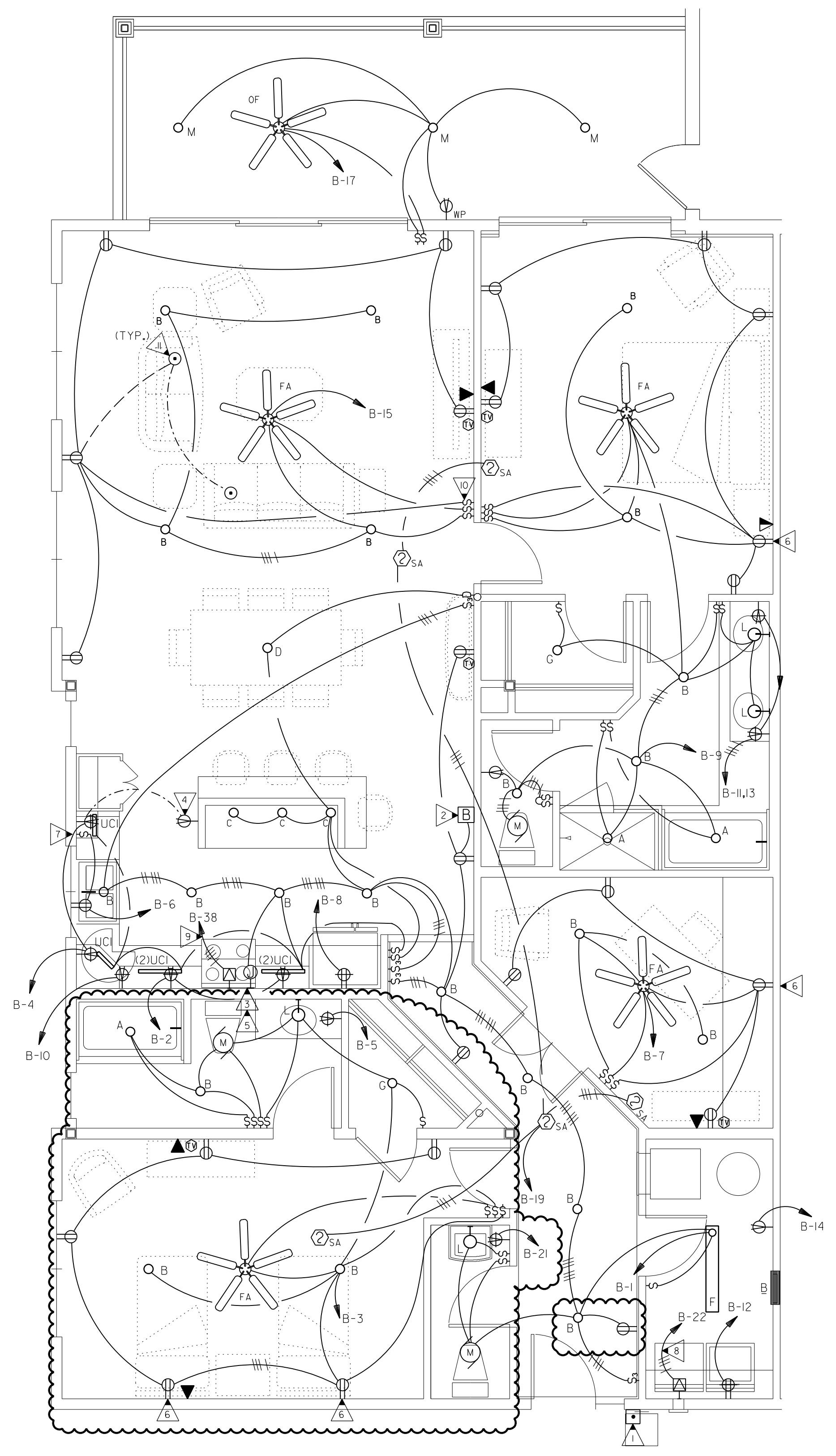


Architecture · Land Planning · Interior Design

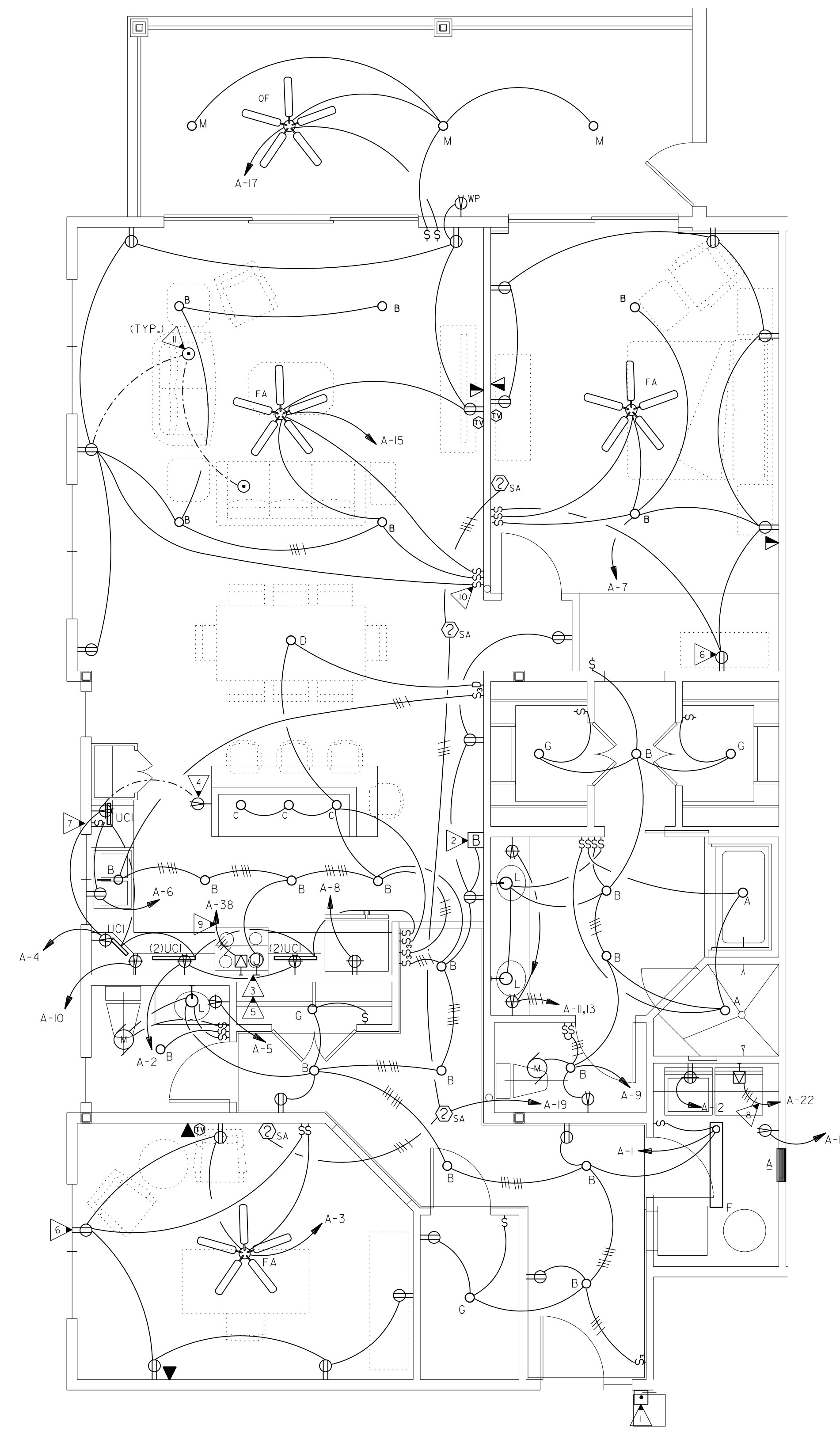
**VIEWPOINT CONDOMINIUM**  
 LOT 6 & 7, BLOCK B, ARNOLD SUBDIVISION  
 1124 POSTELL AVENUE  
 ST. SIMONS ISLAND, GA.

|          |
|----------|
| 1515     |
| 8-25-17  |
| 11-08-17 |
| 6-08-18  |

**E-3**



2 UNIT B - ELECTRICAL  
 E-3 SCALE: 1/4"=1'-0"  
 0 2' 4'



1 UNIT A - ELECTRICAL  
 E-3 SCALE: 1/4"=1'-0"  
 0 2' 4'

**KEYED NOTES:** (THIS SHEET ONLY)

- 1 PROVIDE DOORBELL PUSHBUTTON. SEE DETAIL 3/E-5. COORDINATE EXACT MOUNTING HEIGHT.
- 2 PROVIDE DOORBELL ANNUNCIATOR/CHIME. SEE DETAIL 3/E-5. COORDINATE EXACT MOUNTING.
- 3 COORDINATE MOUNTING HEIGHT WITH ARCHITECT PRIOR TO ROUGH IN.
- 4 COORDINATE WITH CASEWORK.
- 5 PROVIDE CONNECTIONS TO RANGE HOOD PER MANUFACTURERS RECOMMENDATIONS.
- 6 RECEPTACLE FOR TABLE OR FLOOR MOUNTED FIXTURE WITH CORD. RECEPTACLE SHALL HAVE TAB BROKEN SO TOP RECEPTACLE CAN BE SWITCHED.
- 7 SWITCH TO CONTROL TOP HALF OF RECEPTACLE FOR GARBAGE DISPOSAL.
- 8 PROVIDE #10'S ENTIRE CIRCUIT.
- 9 3#8, #10G, 3/4 IN. C.
- 10 SWITCH TO CONTROL FLOOR MOUNTED RECEPTACLES.
- 11 COORDINATE EXACT LOCATION OF FLOOR BOX WITH ARCHITECTURAL.

**GENERAL NOTES:**

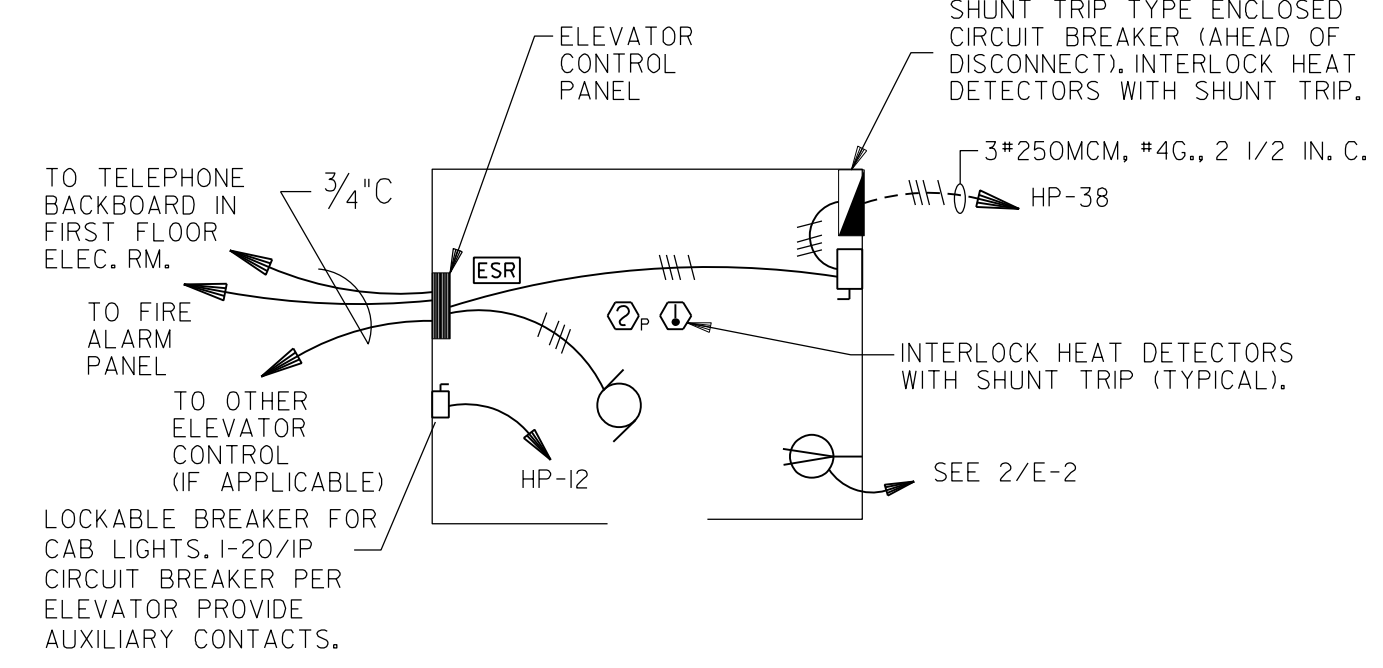
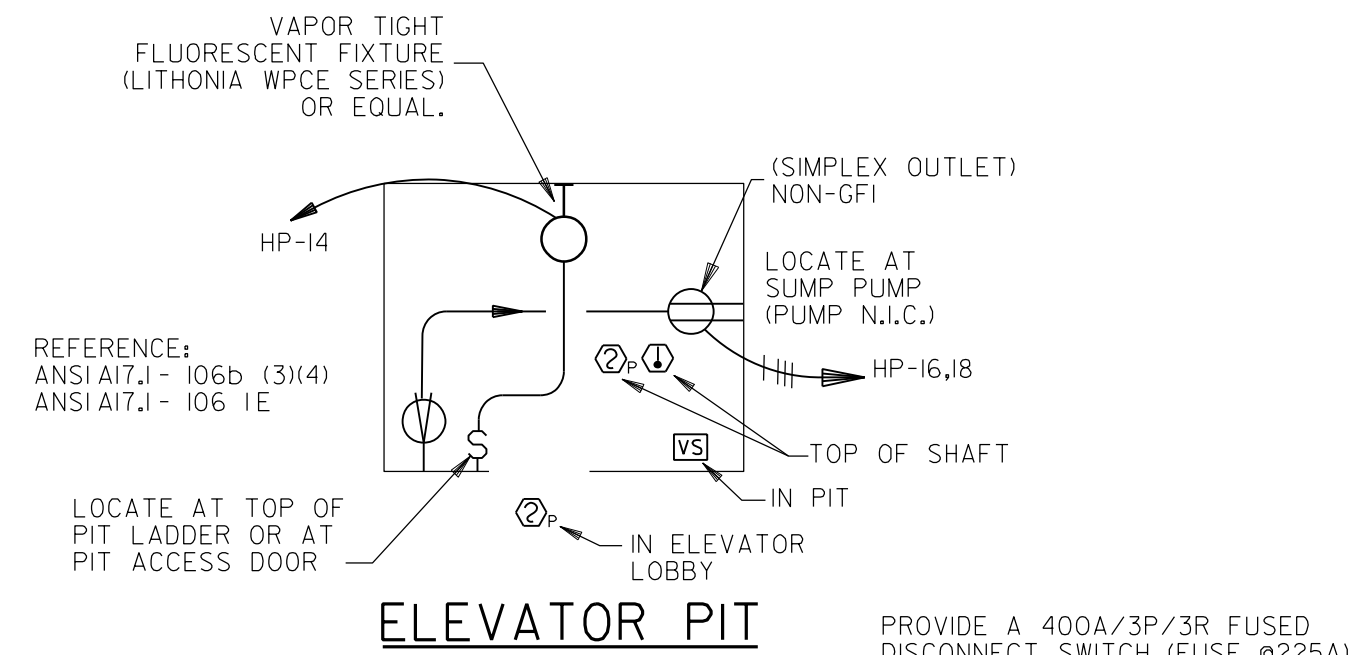
- A. COORDINATE EXACT LOCATIONS OF ALL MECHANICAL EQUIPMENT PRIOR TO ELECTRICAL ROUGH-IN.
- B. ALL FLEXIBLE CONDUIT SHALL BE METALLIC WATERPROOF.
- C. COORDINATE FINAL RECEPTACLE AND TELEPHONE OUTLET LOCATIONS WITH ARCHITECTURAL CASEWORK AND OWNER PRIOR TO ROUGH-IN. NO EXCEPTIONS.
- D. COORDINATE EXACT CONDUIT REQUIREMENTS FOR THERMOSTATS TO ALL AIR HANDLING UNITS. SEE MECHANICAL DRAWINGS FOR EXACT LOCATIONS.
- E. FIRE SEAL ALL FIREWALL PENETRATIONS.
- F. PROVIDE TAMPER RESISTANT (SAFETY TYPE) RECEPTACLES IN ALL UNITS.
- G. PROVIDE AFCI TYPE BREAKERS FOR ALL 20A/1P CIRCUITS AND AFCI/GFCI BREAKERS FOR ALL 20A/1P CIRCUITS WITHIN 6FT OF SINK WHEN GFCI RECEPTACLES ARE NOT UTILIZED (IN ALL UNITS AS PER 2014 NEC).
- H. PROVIDE SMART EXHAUST (BATH FAN/LIGHT CONTROLLER) MADE BY AIRCYCLER (OR APPROVED EQUAL) IN EACH APARTMENT BATHROOM TO CONTROL LIGHT AND EXHAUST FAN. COORDINATE SETTINGS WITH MECHANICAL/OWNER.



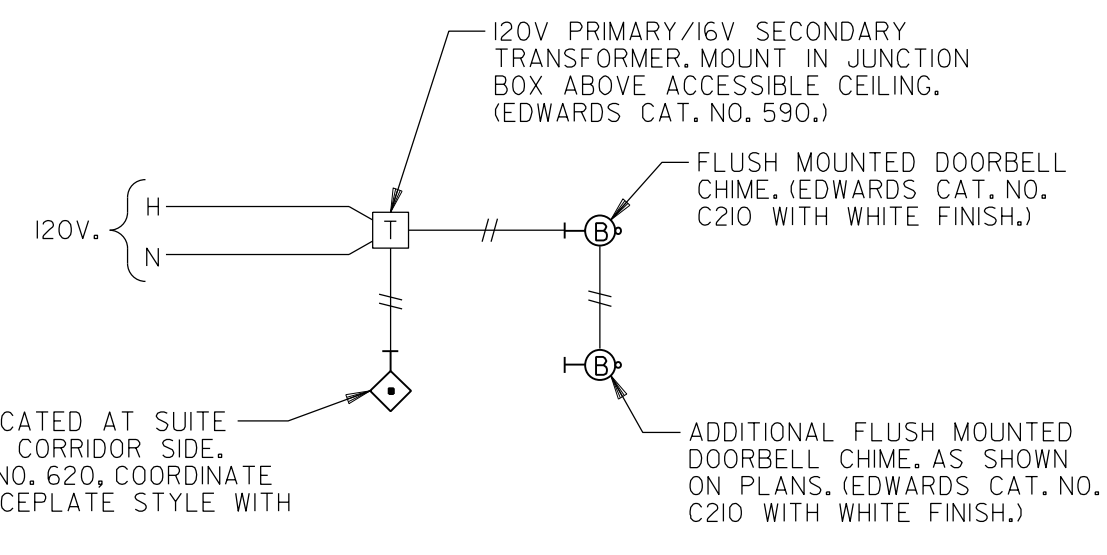


**ELEVATOR NOTES: (DETAIL 3/E4.3 ONLY)**

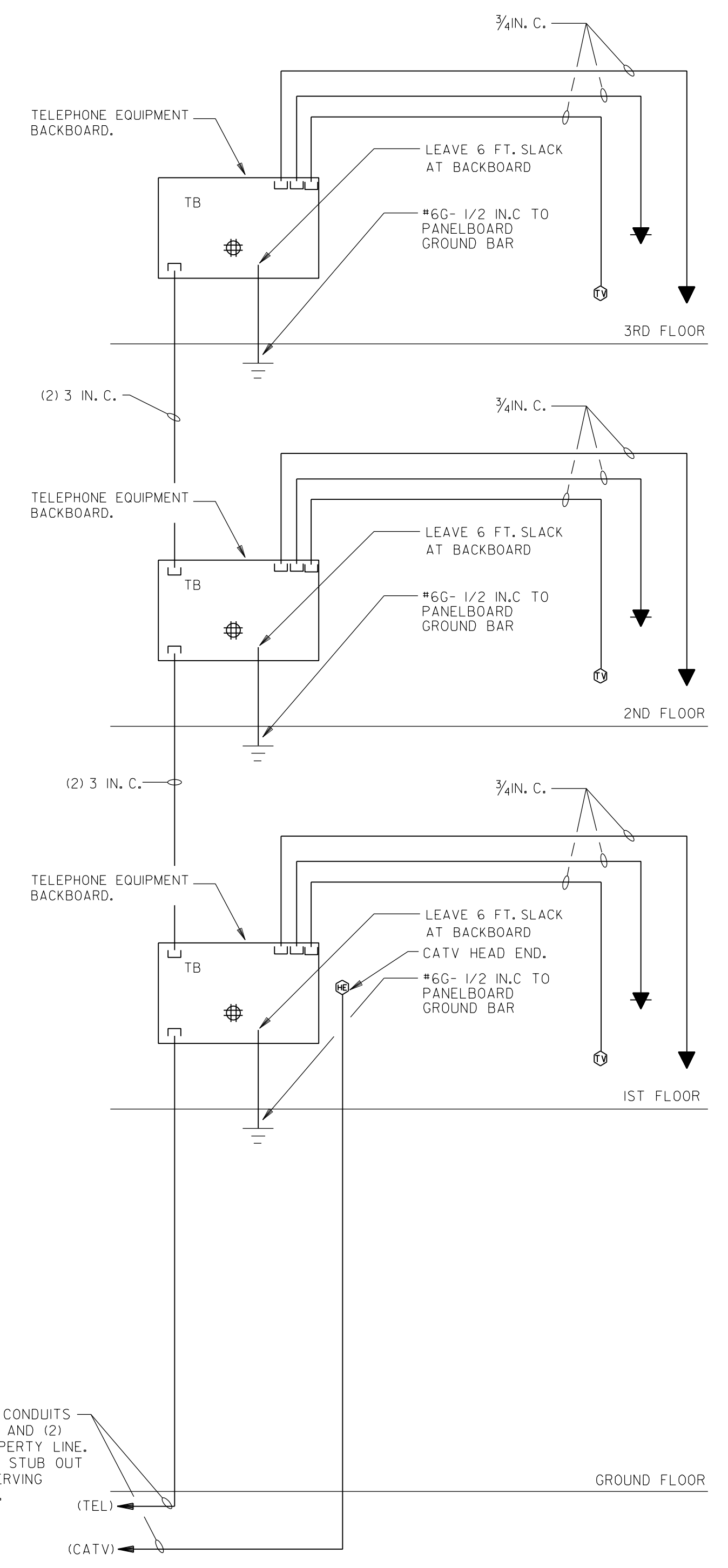
- (A) THE CONTRACTOR SHALL:
  - COORDINATE AMONG THE CONTRACTOR, SUBCONTRACTORS AND ELEVATOR SUPPLIER.
  - SUBMIT AND COORDINATE ELEVATORS BOTH IN ADVANCE OF INSTALLATION AND BEFORE STUBBING OF THE CIRCUITS. SUBMIT ELECTRICAL EQUIPMENT FOR ELEVATORS ACTUALLY PROVIDED.
  - COORDINATE ELEVATOR WORK REGARDLESS OF THE DIVISION UNDER WHICH WORK IS SHOWN.
- (B) PROVIDE ELEVATOR WORK IN CONFORMANCE WITH THE APPLICABLE PROVISIONS OF THE INTERNATIONAL BUILDING CODE CHAPTER 30.
- (C) THE CONTRACTOR SHALL PROVIDE THE FOLLOWING WORK:
  - ELEVATOR CONTROL STATIONS AND RELATED CIRCUITING
  - CONTROL CIRCUITING AND INTERLOCKS INCLUDING CONTROL "CARDS"
  - OTHER ITEMS REQUIRED BY THE ELEVATOR SUPPLIER OR CODES
  - EQUIPMENT ARRANGEMENT IN THE ELEVATOR CONTROL ROOM AS RECOMMENDED BY THE ELEVATOR SUPPLIER AND REQUIRED BY APPLICABLE CODES.
- (D) PER ANSIAI7.1-RULE 106IE, EACH ELEVATOR PIT SHALL BE PROVIDED A PERMANENT FIXTURE AND GFI RECEPTACLE BELOW THE ELEVATOR WITH A SWITCH ACCESSIBLE AT THE TOP OF THE PIT LADDER OR THRU THE PIT ACCESS DOOR.
- (E) ELEVATOR CONTROL ROOM SHALL BE:
  - PER ANSIAI7.1-RULE 101.5, PROVIDED 10 FOOTCANDELS ILLUMINATION MINIMUM AT FLOOR LEVEL
  - PROVIDED DISCONNECTS FOR EACH CAR'S 110 VAC LIGHTING. DISCONNECTS SHALL CONSIST OF SEPARATELY ENCLOSED 1-POLE BREAKERS LOCKABLE IN THE "OFF" POSITION. REFERENCE NEC SECTIONS 620-22 AND 620.52.
- (F) ELEVATOR CONTROL ROOM SHALL:
  - IN ELEVATOR CONTROL ROOM, NEAR THE ENTRY DOOR, FOR EACH ELEVATOR, PROVIDE A LOCKABLE SHUNT TRIP BREAKER. (REFERENCE NFPA CHAP. 70 620-5) MULTIPLE BREAKERS SHALL BE SEPARATELY ENCLOSED. SIZE FOR ELEVATORS ACTUALLY PROVIDED. DEVICE SHALL BE FULLY RATED FOR FAULT CURRENT AVAILABLE.
  - TWO-HOUR FIRE RATED ELEVATOR CONTROL ROOM: SPRINKLER AND AUTOMATIC DISCONNECTING MEANS SHALL NOT BE PROVIDED. REFERENCE GA DEPT OF LABOR - R&R 300-3-6-.25(c)(1)
  - PROVIDE SMOKE SENSING DEVICE IN EACH ELEVATOR LOBBY HOISTWAY, DEDICATED TO INITIATE FIREMAN'S EMERGENCY RETURN PER ANSIAI7.1-RULE 211.3d.
  - CONNECT FOUR DRY CONTACTS FROM THE MAIN SMOKE SENSING PANEL TO THE ELEVATOR CONTROLLER FOR OPERATION OF FIRE SERVICE, PER ANSIAI7.1-RULE 211.3c.
- (G) COMMUNICATIONS:
  - PROVIDE WORKING TELEPHONE OR INTERCOMS IN EACH CAR WITH NECESSARY WIRING PULLED TO THE ELEVATOR CONTROLLER PER ANSIAI7.1-RULE 211J.
  - PROVIDE CONDUIT AND CATEGORY-6 CABLE TO THE COMMUNICATIONS ROOM WITH ONE CABLE PER ELEVATOR CAB. HOMERUNS MAY CONTAIN MULTIPLE CABLES.
- (H) SMOKE DETECTION:
  - PROVIDE SMOKE SENSING DEVICES IN EACH ELEVATOR MACHINE ROOM AND LOBBY HOISTWAY DEDICATED TO INITIATE FIREMAN'S EMERGENCY RETURN PER ANSIAI7.1-RULE 211.3d.
  - PER ANSIAI7.1-RULE 211.3c CONNECT TWO DRY CONTACTS FROM THE MAIN SMOKE SENSING PANEL TO THE ELEVATOR CONTROLLER FOR FIRE SERVICE.
- (I) IN EVENT OF POWER LOSS:
  - PROVIDE ELEVATOR CONTROLS SUCH THAT UPON POWER LOSS, THE ELEVATOR WILL OPEN AT EGRESS LEVEL.
- (J) CONTRACTOR SHALL ARRANGE BREAKERS TO PROVIDE MAXIMUM CLEARANCE. LAYOUT SHOWN IS A CIRCUITING GUIDE ONLY.



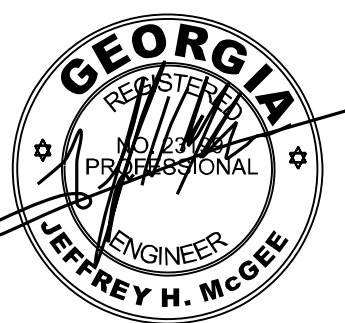
**2 ELEVATOR WIRING**  
NOT TO SCALE



**3 DOORBELL WIRING DIAGRAM**  
NOT TO SCALE

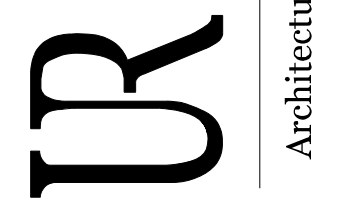


**1 TELEPHONE/CABLE TV RISER**  
NOT TO SCALE



**ELECTRICAL DESIGN CONSULTANTS, INC.**  
175 NEW ST., STE 1  
MACON, GA 31201  
EDC #17062

**USSERY/RULE ARCHITECTS P.C.**  
1804-A FREDERICA ROAD  
ST. SIMONS ISLAND, GEORGIA 31522  
www.urarch.com  
PH. 912-638-6688



Architecture · Land Planning · Interior Design

**VIEWPOINT CONDOMINIUM**  
LOT 6 & 7, BLOCK B, ARNOLD SUBDIVISION  
1124 POSTELL AVENUE  
ST. SIMONS ISLAND, GA.

1515  
8-25-17

|  |
|--|
|  |
|  |
|  |
|  |

**E-5**